

Product datasheet

Recombinant Human CD200R protein ab112432

1 Image

Overview

Product name	Recombinant Human CD200R protein
Protein length	Full length protein

Description

Nature	Recombinant
Source	Wheat germ

Amino Acid Sequence

Accession	Q8TD46-4
Species	Human
Sequence	MLCPWRTANLGLLLILTIFLVAEAEAGAAQPNNLMLQTSKENHALASSSL CMDEKQITQNYSKVLAEVNTSWPVKMATNAVLCCPPIALRNLIITWEII LRGQPSTKAYKKETNETKETNCTDERITWVSRPDQNSDLQIRTVAITHD GYYRCIMVTPDGNFHRGYHLQVLVTPEVTLFQNRNRRTAVCKAVAGKPAAH ISWIPEGDCATKQEYWSNGT/TVKSTCHWEVHNVSTVTCHVSHLTGNKSL YIELLPVPGAKKSAKLYIPYIILTIIILTVGFWLLKVNCRKYKLNKT ESTPVVEEDEMQPYASYTEKNNPLYDTTNKVKASEALQSEVDTDLHTL
Molecular weight	64 kDa including tags
Amino acids	1 to 348

Specifications

Our [Abpromise guarantee](#) covers the use of **ab112432** in the following tested applications.

The application notes include recommended starting dilutions; optimal dilutions/concentrations should be determined by the end user.

Applications	SDS-PAGE ELISA Western blot
Form	Liquid
Additional notes	Best use within three months from the date of receipt of this protein.

Preparation and Storage

Stability and Storage

Shipped on dry ice. Upon delivery aliquot and store at -80°C. Avoid freeze / thaw cycles.

pH: 8.00

Constituents: 0.79% Tris HCl, 0.31% Glutathione

General Info

Function

Receptor for the CD200/OX2 cell surface glycoprotein. Also binds to HHV-8 K14 viral CD200 homolog with identical affinity and kinetics as the host CD200.

Tissue specificity

Expressed in granulocytes, monocytes, most T cells, neutrophils, basophils and a subset of NK, NKT and B cells (at protein level). Expressed in bone marrow, lymph nodes, spleen, lung, liver, spinal cord, kidney. Expressed in monocyte-derived dendritic and mast cells.

Sequence similarities

Belongs to the CD200R family.

Contains 1 Ig-like C2-type (immunoglobulin-like) domain.

Contains 1 Ig-like V-type (immunoglobulin-like) domain.

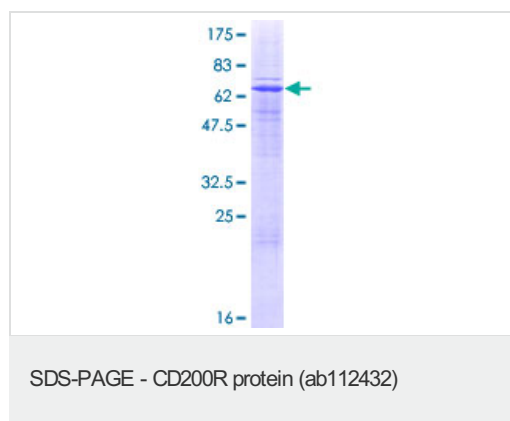
Post-translational modifications

The mature form of isoform 2 and/or isoform 4 starts at sequence position 27 of the corresponding isoform.

Cellular localization

Secreted and Cell membrane.

Images



ab112432 analysed on a 12.5% SDS-PAGE gel stained with Coomassie Blue.

Please note: All products are "FOR RESEARCH USE ONLY AND ARE NOT INTENDED FOR DIAGNOSTIC OR THERAPEUTIC USE"

Our Abpromise to you: Quality guaranteed and expert technical support

- Replacement or refund for products not performing as stated on the datasheet
- Valid for 12 months from date of delivery
- Response to your inquiry within 24 hours
- We provide support in Chinese, English, French, German, Japanese and Spanish
- Extensive multi-media technical resources to help you
- We investigate all quality concerns to ensure our products perform to the highest standards

If the product does not perform as described on this datasheet, we will offer a refund or replacement. For full details of the Abpromise,

please visit <https://www.abcam.com/abpromise> or contact our technical team.

Terms and conditions

- Guarantee only valid for products bought direct from Abcam or one of our authorized distributors