

Product datasheet

Recombinant Human CLK1 protein ab114706

1 Image

Overview

Product name Recombinant Human CLK1 protein

Protein length Full length protein

Description

Nature Recombinant

Source Wheat germ

Amino Acid Sequence

Accession [P49759](#)

Species Human

Sequence

```
MRHSKRTYCPDWDDKDWDYGKWRSSSSHKRRKRSH
SSAQENKRCKYNHSK
MCDSHYLESRSINEKDYHSRRYIDEYRNDYTQGCEPGH
RQRDHESRYQNH
SSKSSGRSGRSSYKSKHRIHHSTSHRRSHGKSHRRKR
TRSVEDDEEGHLI
CQSGDVL SARYEMDTLGEGAFGKVVECIDHKAGGRH
VAVKMKNVDRYC
EAARSEIQVLEHLNTTDPNSTFRCVQMLEWFEHHGHIC
NFELLGLSTYD
FIKENGFLPFRLDHIRKMAYQICKSVNFLHSNKLTHIDL
KPENILFVQSD
YTEAYNPKIKRDERTLINPDIKVVDFGSATYDDEHHSTL
VSTRHYRAPEV
ILALGWSQPCDVWSIGCILIEYYLGFTVFPTHDSKEHLA
MMERILGPLPK
HMIQKTRKRKYFHHDRLDWDEHSSAGRYVSRRCPLK
EFMLSQDVEHERL
FDLIQKMLEYDPAKRITLREALKHPFFDLLKCSI
```

Molecular weight 79 kDa including tags

Amino acids 1 to 484

Specifications

Our [Abpromise guarantee](#) covers the use of **ab114706** in the following tested applications.

The application notes include recommended starting dilutions; optimal dilutions/concentrations should be determined by the end user.

Applications	ELISA SDS-PAGE Western blot
Form	Liquid
Additional notes	Protein concentration is above or equal to 0.05 mg/ml. Best use within three months from the date of receipt of this protein.

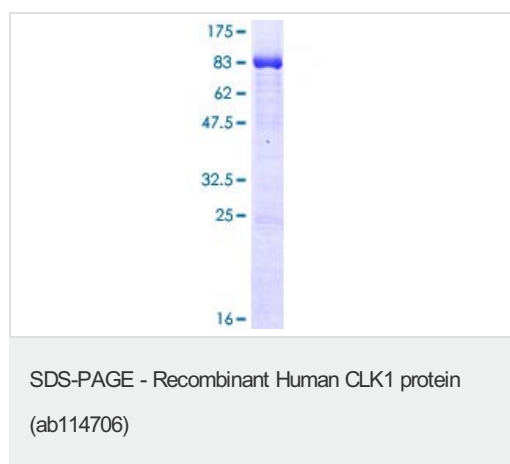
Preparation and Storage

Stability and Storage	Shipped on dry ice. Upon delivery aliquot and store at -80°C. Avoid freeze / thaw cycles. pH: 8.00 Constituents: 0.3% Glutathione, 0.79% Tris HCl
------------------------------	---

General Info

Function	Phosphorylates serine- and arginine-rich (SR) proteins of the spliceosomal complex may be a constituent of a network of regulatory mechanisms that enable SR proteins to control RNA splicing. Phosphorylates serines, threonines and tyrosines.
Sequence similarities	Belongs to the protein kinase superfamily. CMGC Ser/Thr protein kinase family. Lammer subfamily. Contains 1 protein kinase domain.
Post-translational modifications	Autophosphorylates on all three types of residues.
Cellular localization	Nucleus.

Images



12.5% SDS-PAGE showing ab114706 at approximately 79.31 kDa stained with Coomassie Blue.

Please note: All products are "FOR RESEARCH USE ONLY AND ARE NOT INTENDED FOR DIAGNOSTIC OR THERAPEUTIC USE"

Our Abpromise to you: Quality guaranteed and expert technical support

- Replacement or refund for products not performing as stated on the datasheet
- Valid for 12 months from date of delivery
- Response to your inquiry within 24 hours

- We provide support in Chinese, English, French, German, Japanese and Spanish
- Extensive multi-media technical resources to help you
- We investigate all quality concerns to ensure our products perform to the highest standards

If the product does not perform as described on this datasheet, we will offer a refund or replacement. For full details of the Abpromise, please visit <https://www.abcam.com/abpromise> or contact our technical team.

Terms and conditions

- Guarantee only valid for products bought direct from Abcam or one of our authorized distributors