

Product datasheet

Recombinant Human CMC1 protein (denatured)  
 ab168083

1 Image

Overview

---

<b>Product name</b>	Recombinant Human CMC1 protein (denatured)
<b>Protein length</b>	Full length protein
<b>Description</b>	Recombinant Human CMC1 protein

Description

---

<b>Nature</b>	Recombinant
<b>Source</b>	Escherichia coli
<b>Amino Acid Sequence</b>	
<b>Accession</b>	<a href="#">Q7Z7K0</a>
<b>Species</b>	Human
<b>Sequence</b>	MGSSHHHHHH SSGLVPRGSH MGSMALDPAD QHLRHVEKDV LIPKIMREKA KERCSEQVQD FTKCCKNSGV LMVVKCRKEN SALKECLTAY YNDPAFYEEC KMEYLKEREE FRKTGIPTKK RLQKLPTSM
<b>Molecular weight</b>	15 kDa including tags
<b>Amino acids</b>	1 to 106
<b>Tags</b>	His tag N-Terminus

Specifications

---

Our [Abpromise guarantee](#) covers the use of **ab168083** in the following tested applications.

The application notes include recommended starting dilutions; optimal dilutions/concentrations should be determined by the end user.

<b>Applications</b>	SDS-PAGE
<b>Purity</b>	> 85 % SDS-PAGE.
<b>Form</b>	Liquid

Preparation and Storage

---

## Stability and Storage

Shipped at 4°C. Store at +4°C short term (1-2 weeks). Upon delivery aliquot. Store at -20°C or -80°C. Avoid freeze / thaw cycle.

pH: 8.00

Constituents: 2.4% Urea, 0.32% Tris HCl, 10% Glycerol

## General Info

### Function

Required for mitochondrial cytochrome c oxidase (COX) assembly and respiration. Binds copper. May be involved in copper trafficking and distribution to COX and SOD1.

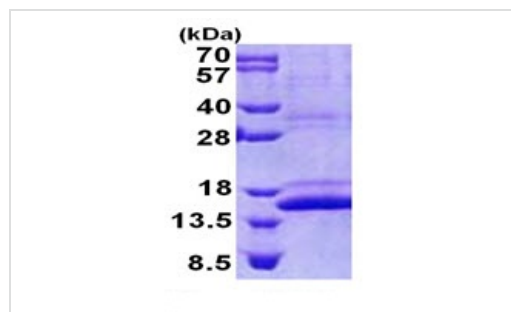
### Sequence similarities

Belongs to the CMC1 family.

### Cellular localization

Mitochondrion. Colocalizes with MT-CO1.

## Images



15% SDS-PAGE analysis of ab168083 (3µg).

SDS-PAGE - Recombinant Human CMC1 protein  
(denatured) (ab168083)

**Please note:** All products are "FOR RESEARCH USE ONLY AND ARE NOT INTENDED FOR DIAGNOSTIC OR THERAPEUTIC USE"

## Our Abpromise to you: Quality guaranteed and expert technical support

- Replacement or refund for products not performing as stated on the datasheet
- Valid for 12 months from date of delivery
- Response to your inquiry within 24 hours
- We provide support in Chinese, English, French, German, Japanese and Spanish
- Extensive multi-media technical resources to help you
- We investigate all quality concerns to ensure our products perform to the highest standards

If the product does not perform as described on this datasheet, we will offer a refund or replacement. For full details of the Abpromise, please visit <https://www.abcam.com/abpromise> or contact our technical team.

## Terms and conditions

- Guarantee only valid for products bought direct from Abcam or one of our authorized distributors