

Product datasheet

Recombinant Human CPNE5 protein ab163627

1 Image

Overview

Product name	Recombinant Human CPNE5 protein
Protein length	Full length protein

Description

Nature	Recombinant
Source	Wheat germ

Amino Acid Sequence

Species	Human
Sequence	MK K K K Y V N S G T V T L L S F A V E S E C T F L D Y I K G G T Q I N F T V A I D F T A S N G N P S Q S T S L H Y M S P Y Q L N A Y A L A L T A V G E I I Q H Y D S D K M F P A L G F G A K L P P D G R V S H E F P L N G N Q E N P S C C G I D G I L E A Y H R S L R T V Q L Y G P T N F A P V V T H V A R N A A A V Q D G S Q Y S V L L I I T D G V I S D M A Q T K E A M N A A K L P M S I I I V G V G Q A E F D A M V E L D G D D V R I S S R G K L A E R D I V Q F V P F R D Y V D R T G N H V L S M A R L A R D V L A E I P D Q L V S Y M K A Q G I R P R P P P A A P T H S P S Q S P A R T P P A S P L H T H I
Amino acids	1 to 301
Tags	proprietary tag N-Terminus

Specifications

Our [Abpromise guarantee](#) covers the use of **ab163627** in the following tested applications.

The application notes include recommended starting dilutions; optimal dilutions/concentrations should be determined by the end user.

Applications	ELISA Western blot
Form	Liquid
Additional notes	Protein concentration is above or equal to 0.05 mg/ml.

Preparation and Storage

Stability and Storage	Shipped on dry ice. Upon delivery aliquot and store at -80°C. Avoid freeze / thaw cycles.
-----------------------	---

pH: 8.00

Constituents: 0.31% Glutathione, 0.79% Tris HCl

## General Info

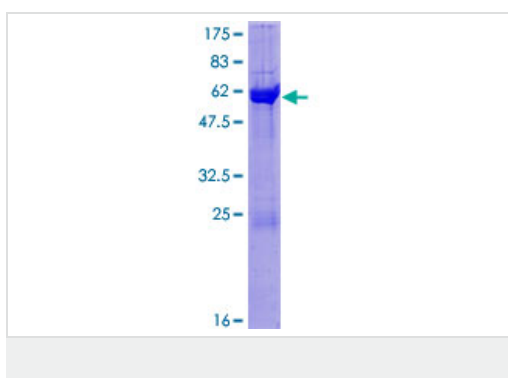
---

<b>Function</b>	May function in membrane trafficking. Exhibits calcium-dependent phospholipid binding properties.
<b>Sequence similarities</b>	Belongs to the copine family. Contains 2 C2 domains. Contains 1 VWFA domain.

---

## Images

---



ab163627 on a 12.5% SDS-PAGE stained with Coomassie Blue.

**Please note:** All products are "FOR RESEARCH USE ONLY AND ARE NOT INTENDED FOR DIAGNOSTIC OR THERAPEUTIC USE"

## Our Abpromise to you: Quality guaranteed and expert technical support

---

- Replacement or refund for products not performing as stated on the datasheet
- Valid for 12 months from date of delivery
- Response to your inquiry within 24 hours
  
- We provide support in Chinese, English, French, German, Japanese and Spanish
- Extensive multi-media technical resources to help you
- We investigate all quality concerns to ensure our products perform to the highest standards

If the product does not perform as described on this datasheet, we will offer a refund or replacement. For full details of the Abpromise, please visit <https://www.abcam.com/abpromise> or contact our technical team.

## Terms and conditions

---

- Guarantee only valid for products bought direct from Abcam or one of our authorized distributors