

Product datasheet

Recombinant Human Chromogranin A protein ab85339

1 Image

Overview

Product name Recombinant Human Chromogranin A protein
Protein length Protein fragment

Description

Nature Recombinant
Source Escherichia coli

Amino Acid Sequence

Species Human
Sequence MLPVNSPMNK GDTEVMKCV EVISDTLSKP
 SPMPVSQECF ETLRGDERIL SILRHQNLK
 ELQDLALQGA KERAHQQKKH SGFEDELSEV
 LENQSSQAEL KEAVEEPSSK DVME

Amino acids 19 to 131
Additional sequence information This fragment is from the N terminus of Chromogranin A.

Specifications

Our [Abpromise guarantee](#) covers the use of **ab85339** in the following tested applications.
 The application notes include recommended starting dilutions; optimal dilutions/concentrations should be determined by the end user.

Applications SDS-PAGE
Purity > 95 % SDS-PAGE.
 ab85339 is purified using conventional chromatography techniques. Endotoxin Level: < 1.0 EU per 1 µg of protein (determined by LAL method).
Form Liquid
Additional notes

Vasostatin 2 is the N-terminal fragment (19-131 aa) derived from the cleavage of chromogranin A (CgA) which is a member of the chromogranin/secretogranin(granins) family of neuroendocrine secretory proteins. Vasostatin 2 has been shown to exert several biological activities on several tissues and organs and exerts a large spectrum of homeostatic actions,

including antifungal and antimicrobial effect, modulation of cell adhesion, and inhibition of parathyroid hormone secretion.

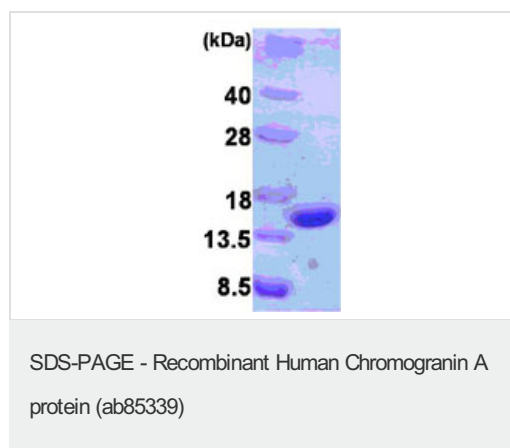
Preparation and Storage

Stability and Storage	Shipped at 4°C. Upon delivery aliquot and store at -20°C or -80°C. Avoid repeated freeze / thaw cycles. pH: 8.00 Constituents: 0.316% Tris HCl, 10% Glycerol
------------------------------	--

General Info

Function	Pancreastatin strongly inhibits glucose induced insulin release from the pancreas.
Sequence similarities	Belongs to the chromogranin/secretogranin protein family.
Post-translational modifications	Sulfated on tyrosine residues and/or contains sulfated glycans. O-glycosylated with core 1 or possibly core 8 glycans.
Cellular localization	Secreted. Neuroendocrine and endocrine secretory granules.

Images



15% SDS-PAGE showing ab85339 at approximately 12.8kDa (3µg).

Please note: All products are "FOR RESEARCH USE ONLY AND ARE NOT INTENDED FOR DIAGNOSTIC OR THERAPEUTIC USE"

Our Abpromise to you: Quality guaranteed and expert technical support

- Replacement or refund for products not performing as stated on the datasheet
- Valid for 12 months from date of delivery
- Response to your inquiry within 24 hours
- We provide support in Chinese, English, French, German, Japanese and Spanish
- Extensive multi-media technical resources to help you
- We investigate all quality concerns to ensure our products perform to the highest standards

If the product does not perform as described on this datasheet, we will offer a refund or replacement. For full details of the Abpromise,

please visit <https://www.abcam.com/abpromise> or contact our technical team.

Terms and conditions

- Guarantee only valid for products bought direct from Abcam or one of our authorized distributors