

Product datasheet

Recombinant Human Cofilin protein ab62958

[2 Images](#)

Overview

Product name	Recombinant Human Cofilin protein
Protein length	Full length protein

Description

Nature	Recombinant
Source	Escherichia coli

Amino Acid Sequence

Species	Human
Sequence	<p>MGSSHHHHHH SSSLVPRGSH MASGVAVSDG VIKVFNDMKV RKSSTPEEVK KRKKAVLFCL SEDKKNILE EGKEILVGDV GQTVDDPYAT FVKMLPKDC RYALYDATYE TKESKKEDLV FIFWAPESAP LSKSMYASS KDAIKKKLTG IKHELQANCY EEVKDRCTLA EKLGGSAVIS LEGKPL</p>

Specifications

Our [Abpromise guarantee](#) covers the use of **ab62958** in the following tested applications.

The application notes include recommended starting dilutions; optimal dilutions/concentrations should be determined by the end user.

Applications	SDS-PAGE Western blot
Purity	> 95 % SDS-PAGE. purified by using conventional chromatography techniques
Form	Liquid

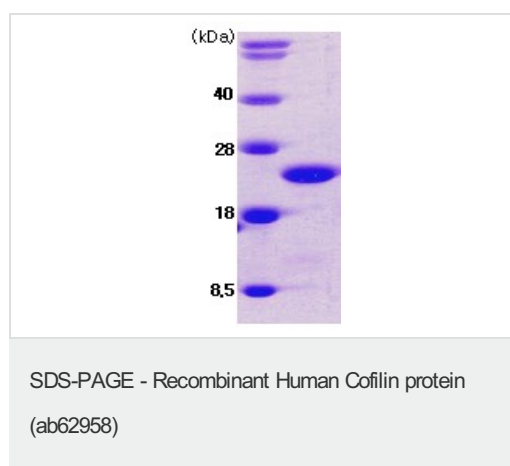
Preparation and Storage

Stability and Storage	Shipped at 4°C. Upon delivery aliquot and store at -20°C. Avoid freeze / thaw cycles. pH: 8.00 Constituents: 0.242% Tris, 10% Glycerol
------------------------------	--

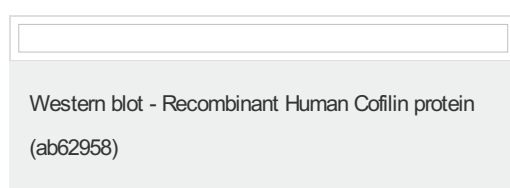
General Info

Function	Controls reversibly actin polymerization and depolymerization in a pH-sensitive manner. It has the ability to bind G- and F-actin in a 1:1 ratio of cofilin to actin. It is the major component of intranuclear and cytoplasmic actin rods.
Tissue specificity	Widely distributed in various tissues.
Sequence similarities	Belongs to the actin-binding proteins ADF family. Contains 1 ADF-H domain.
Post-translational modifications	Phosphorylated on Ser-3 in resting cells.
Cellular localization	Nucleus matrix. Cytoplasm > cytoskeleton. Almost completely in nucleus in cells exposed to heat shock or 10% dimethyl sulfoxide.

Images



SDS Page analysis of ab62958 (3ug, 15% gel).



Please note: All products are "FOR RESEARCH USE ONLY AND ARE NOT INTENDED FOR DIAGNOSTIC OR THERAPEUTIC USE"

Our Abpromise to you: Quality guaranteed and expert technical support

- Replacement or refund for products not performing as stated on the datasheet
- Valid for 12 months from date of delivery
- Response to your inquiry within 24 hours
- We provide support in Chinese, English, French, German, Japanese and Spanish
- Extensive multi-media technical resources to help you
- We investigate all quality concerns to ensure our products perform to the highest standards

If the product does not perform as described on this datasheet, we will offer a refund or replacement. For full details of the Abpromise, please visit <https://www.abcam.com/abpromise> or contact our technical team.

Terms and conditions

- Guarantee only valid for products bought direct from Abcam or one of our authorized distributors