

Product datasheet

Recombinant Human Cripto1 protein ab93004

1 Image

Overview

---

<b>Product name</b>	Recombinant Human Cripto1 protein
<b>Protein length</b>	Full length protein

Description

---

<b>Nature</b>	Recombinant
<b>Source</b>	Escherichia coli
<b>Amino Acid Sequence</b>	
<b>Species</b>	Human

Specifications

---

Our [Abpromise guarantee](#) covers the use of **ab93004** in the following tested applications.

The application notes include recommended starting dilutions; optimal dilutions/concentrations should be determined by the end user.

<b>Applications</b>	SDS-PAGE Mass Spectrometry Western blot ELISA
<b>Form</b>	Lyophilised
<b>Additional notes</b>	After reconstitution, store in working aliquots at -80°C.

Preparation and Storage

---

<b>Stability and Storage</b>	Shipped on dry ice. Upon delivery aliquot and store at -80°C. Avoid freeze / thaw cycles. Preservative: None Constituents: PBS, pH 7.4
------------------------------	----------------------------------------------------------------------------------------------------------------------------------------------

General Info

---

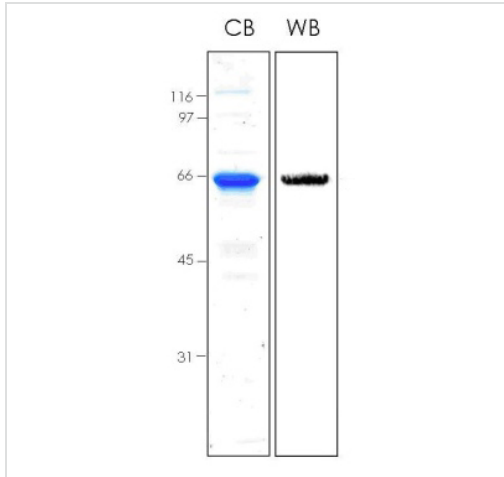
<b>Function</b>	Could play a role in the determination of the epiblastic cells that subsequently give rise to the mesoderm.
-----------------	-------------------------------------------------------------------------------------------------------------

<b>Tissue specificity</b>	Preferentially expressed in gastric and colorectal carcinomas than in their normal counterparts.
<b>Sequence similarities</b>	Contains 1 EGF-like domain.
<b>Cellular localization</b>	Cell membrane.

---

## Images

---



ab93004 analysed by 10% SDS-PAGE stained with Coomassie Blue (CB) and immunoblotted with anti-MBP (WB).

**Please note:** All products are "FOR RESEARCH USE ONLY AND ARE NOT INTENDED FOR DIAGNOSTIC OR THERAPEUTIC USE"

## Our Abpromise to you: Quality guaranteed and expert technical support

---

- Replacement or refund for products not performing as stated on the datasheet
- Valid for 12 months from date of delivery
- Response to your inquiry within 24 hours
- We provide support in Chinese, English, French, German, Japanese and Spanish
- Extensive multi-media technical resources to help you
- We investigate all quality concerns to ensure our products perform to the highest standards

If the product does not perform as described on this datasheet, we will offer a refund or replacement. For full details of the Abpromise, please visit <https://www.abcam.com/abpromise> or contact our technical team.

## Terms and conditions

---

- Guarantee only valid for products bought direct from Abcam or one of our authorized distributors