

Product datasheet

Recombinant Human Ctip1 / BCL-11A protein
ab112415

1 Image

Overview

Product name	Recombinant Human Ctip1 / BCL-11A protein
Protein length	Protein fragment

Description

Nature	Recombinant
Source	Wheat germ
Amino Acid Sequence	
Accession	Q9H165
Species	Human
Sequence	MSRRKQGKPKQLSKREFSPEPLEAILTDDEPDHGPLG APEGDHDLLTCGQ CQMNFLGDILIFIEHKRKQCNGSLCLEKAVDKPPSPS
Molecular weight	35 kDa including tags
Amino acids	1 to 88

Specifications

Our [Abpromise guarantee](#) covers the use of **ab112415** in the following tested applications.

The application notes include recommended starting dilutions; optimal dilutions/concentrations should be determined by the end user.

Applications	SDS-PAGE Western blot ELISA
Form	Liquid
Additional notes	ab112415 is best use within three months from the date of receipt. Previously labelled as Ctip1.

Preparation and Storage

Stability and Storage	Shipped on dry ice. Upon delivery aliquot and store at -80°C. Avoid freeze / thaw cycles.
------------------------------	---

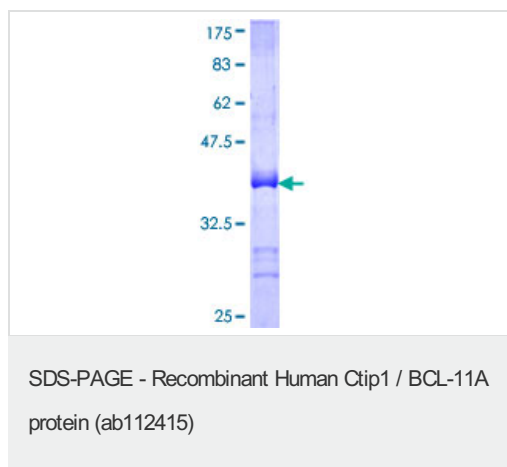
pH: 8.00

Constituents: 0.79% Tris HCl, 0.31% Glutathione

General Info

Function	Functions as a myeloid and B-cell proto-oncogene. May play important roles in leukemogenesis and hematopoiesis. An essential factor in lymphopoiesis, is required for B-cell formation in fetal liver. May function as a modulator of the transcriptional repression activity of ARP1.
Tissue specificity	Expressed at high levels in brain, spleen thymus, bone marrow and testis. Expressed in CD34-positive myeloid precursor cells, B-cells, monocytes and megakaryocytes. Expression is tightly regulated during B-cell development.
Involvement in disease	Note=Chromosomal aberrations involving BCL11A may be a cause of lymphoid malignancies. Translocation t(2;14)(p13;q32.3) causes BCL11A deregulation and amplification.
Sequence similarities	Contains 6 C2H2-type zinc fingers.
Post-translational modifications	Sumoylated by SUMO1.
Cellular localization	Cytoplasm. Nucleus. Associates with the nuclear body. Colocalizes with SUMO1 and SENP2 in nuclear speckles.

Images



12.5% SDS-PAGE showing ab112415 stained with Coomassie Blue.

Please note: All products are "FOR RESEARCH USE ONLY AND ARE NOT INTENDED FOR DIAGNOSTIC OR THERAPEUTIC USE"

Our Abpromise to you: Quality guaranteed and expert technical support

- Replacement or refund for products not performing as stated on the datasheet
- Valid for 12 months from date of delivery
- Response to your inquiry within 24 hours
- We provide support in Chinese, English, French, German, Japanese and Spanish
- Extensive multi-media technical resources to help you
- We investigate all quality concerns to ensure our products perform to the highest standards

If the product does not perform as described on this datasheet, we will offer a refund or replacement. For full details of the Abpromise, please visit <https://www.abcam.com/abpromise> or contact our technical team.

Terms and conditions

- Guarantee only valid for products bought direct from Abcam or one of our authorized distributors