

## Product datasheet

# Recombinant Human DAPP1 protein ab162070

1 Image

### Overview

<b>Product name</b>	Recombinant Human DAPP1 protein
<b>Protein length</b>	Full length protein

### Description

<b>Nature</b>	Recombinant
<b>Source</b>	Wheat germ
<b>Amino Acid Sequence</b>	
<b>Species</b>	Human
<b>Sequence</b>	<p>MGRAELLEGKMSTQDPSDLWSRSDGEAELLQDLGW          YHGNLTRHAAEALLL          SNGCDGSYLLRDSNETTGLYSLSVRAKDSVKHFHVEY          TGYSFKFGNEFS          SLKDFVKHFANQPLIGSETGTLMLKHPYPRKVEEPSI          YESVRVHTAMQT          GRTEDDLVPAPSLGTKEGYLTKQGGLVKTWKTRWFT          LHRNELKYFKDQM          SPEPIRILDLTECSAVQFDYSQERVNCFCLVFPFRTFYL          CAKTGVEADEW          IKILRWKLSQIRKQLNQGEGTIRSRSFIFK</p>
<b>Amino acids</b>	1 to 280
<b>Tags</b>	proprietary tag N-Terminus

### Specifications

Our [Abpromise guarantee](#) covers the use of **ab162070** in the following tested applications.

The application notes include recommended starting dilutions; optimal dilutions/concentrations should be determined by the end user.

<b>Applications</b>	Western blot ELISA
<b>Form</b>	Liquid
<b>Additional notes</b>	Protein concentration is above or equal to 0.05 mg/ml.

### Preparation and Storage

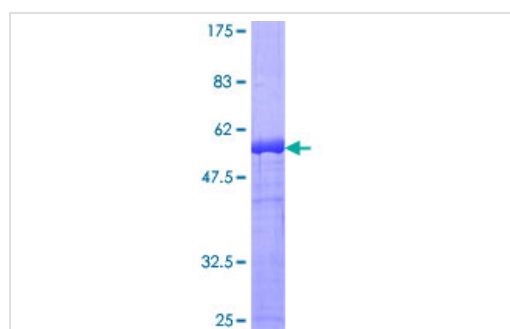
## Preparation and Storage

<b>Stability and Storage</b>	Shipped on dry ice. Upon delivery aliquot and store at -80°C. Avoid freeze / thaw cycles. pH: 8.00 Constituents: 0.31% Glutathione, 0.79% Tris HCl
------------------------------	--

## General Info

<b>Function</b>	May act as a B-cell-associated adapter that regulates B-cell antigen receptor (BCR)-signaling downstream of PI3K.
<b>Tissue specificity</b>	Highly expressed in placenta and lung, followed by brain, heart, kidney, liver, pancreas and skeletal muscle. Expressed by B-lymphocytes, but not T-lymphocytes or nonhematopoietic cells.
<b>Sequence similarities</b>	Contains 1 PH domain. Contains 1 SH2 domain.
<b>Post-translational modifications</b>	Phosphorylated on tyrosine residues.
<b>Cellular localization</b>	Cytoplasm. Membrane. Membrane-associated after cell stimulation leading to its translocation.

## Images



ab162070 on a 12.5% SDS-PAGE stained with Coomassie Blue.

SDS-PAGE - Recombinant Human DAPP1 protein  
(ab162070)

**Please note:** All products are "FOR RESEARCH USE ONLY AND ARE NOT INTENDED FOR DIAGNOSTIC OR THERAPEUTIC USE"

## Our Abpromise to you: Quality guaranteed and expert technical support

- Replacement or refund for products not performing as stated on the datasheet
- Valid for 12 months from date of delivery
- Response to your inquiry within 24 hours
- We provide support in Chinese, English, French, German, Japanese and Spanish
- Extensive multi-media technical resources to help you
- We investigate all quality concerns to ensure our products perform to the highest standards

If the product does not perform as described on this datasheet, we will offer a refund or replacement. For full details of the Abpromise, please visit <https://www.abcam.com/abpromise> or contact our technical team.

## Terms and conditions

---

- Guarantee only valid for products bought direct from Abcam or one of our authorized distributors