

Product datasheet

Recombinant Human DERL1 protein ab163985

1 Image

Overview

Product name	Recombinant Human DERL1 protein
Protein length	Protein fragment

Description

Nature	Recombinant
Source	Wheat germ

Amino Acid Sequence

Species	Human
Sequence	AQLNRDMVSWFGTRFKACYLPWVILGFNYIIGGSVINELIGNLVGHLY FFLMFRYPMDLGGRNFLSTPQFLYRWLPSRRGGVSGFGVPPASMRRAADQ
Amino acids	134 to 233
Tags	proprietary tag N-Terminus

Specifications

Our [Abpromise guarantee](#) covers the use of **ab163985** in the following tested applications.

The application notes include recommended starting dilutions; optimal dilutions/concentrations should be determined by the end user.

Applications	Western blot ELISA
Form	Liquid
Additional notes	Protein concentration is above or equal to 0.05 mg/ml.

Preparation and Storage

Stability and Storage	Shipped on dry ice. Upon delivery aliquot and store at -80°C. Avoid freeze / thaw cycles. pH: 8.00 Constituents: 0.31% Glutathione, 0.79% Tris HCl
------------------------------	--

General Info

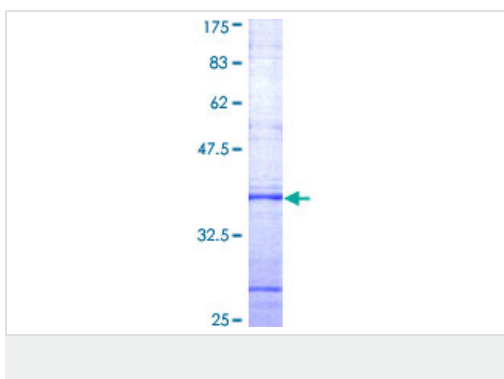
Relevance

Derlin 1 is a channel-like protein found in the endoplasmic reticulum (ER) membrane. It is specifically required for the degradation of misfolded ER luminal proteins. Derlin 1 participates in the transfer of misfolded proteins from the ER to the cytosol, where they are destroyed by the proteasome in a ubiquitin-dependent manner. It may act by forming a channel that allows the retrotranslocation of misfolded proteins into the cytosol and then transferring them to the ATPase VCP complex, which translocates and ubiquitinates misfolded proteins. In the case of infection by cytomegaloviruses, derlin 1 plays a central role in export from the ER and subsequent degradation of MHC class I heavy chains via its interaction with US11 viral protein, which recognizes and associates with MHC class I heavy chains. Derlin 1 also participates in the degradation of misfolded cytomegalovirus US2 protein.

Cellular localization

Endoplasmic reticulum; multi pass membrane protein.

Images



ab163985 on a 12.5% SDS-PAGE stained with Coomassie Blue.

Please note: All products are "FOR RESEARCH USE ONLY AND ARE NOT INTENDED FOR DIAGNOSTIC OR THERAPEUTIC USE"

Our Abpromise to you: Quality guaranteed and expert technical support

- Replacement or refund for products not performing as stated on the datasheet
- Valid for 12 months from date of delivery
- Response to your inquiry within 24 hours
- We provide support in Chinese, English, French, German, Japanese and Spanish
- Extensive multi-media technical resources to help you
- We investigate all quality concerns to ensure our products perform to the highest standards

If the product does not perform as described on this datasheet, we will offer a refund or replacement. For full details of the Abpromise, please visit <https://www.abcam.com/abpromise> or contact our technical team.

Terms and conditions

- Guarantee only valid for products bought direct from Abcam or one of our authorized distributors