

## Product datasheet

# Recombinant Human DOCK1 protein ab114754

[1 Image](#)

### Overview

---

<b>Product name</b>	Recombinant Human DOCK1 protein
<b>Protein length</b>	Full length protein

### Description

---

<b>Nature</b>	Recombinant
<b>Source</b>	Wheat germ

### Amino Acid Sequence

<b>Accession</b>	<a href="#">Q14185</a>
<b>Species</b>	Human
<b>Sequence</b>	MRIGRQSCKIHNYAINNGLFFKCMISPPSGDVRNDIYVTLVQGDFDKGSK TTAKNVEVTVSVYDEDGKRLEHVIFPGAGDEAISEYKSVIYYQVKQPRWF ETVKVLF TWSFYHMALIMKCSFVTQGNILTSSSARELLQAGR VSPNKVIQ GC
<b>Molecular weight</b>	43 kDa including tags
<b>Amino acids</b>	1 to 152

### Specifications

---

Our [Abpromise guarantee](#) covers the use of **ab114754** in the following tested applications.

The application notes include recommended starting dilutions; optimal dilutions/concentrations should be determined by the end user.

<b>Applications</b>	ELISA SDS-PAGE Western blot
<b>Form</b>	Liquid
<b>Additional notes</b>	Protein concentration is above or equal to 0.05 µg/ul. Best use within three months from the date of receipt of this protein.

### Preparation and Storage

---

<b>Stability and Storage</b>	Shipped on dry ice. Upon delivery aliquot and store at -80°C. Avoid freeze / thaw cycles.
------------------------------	---

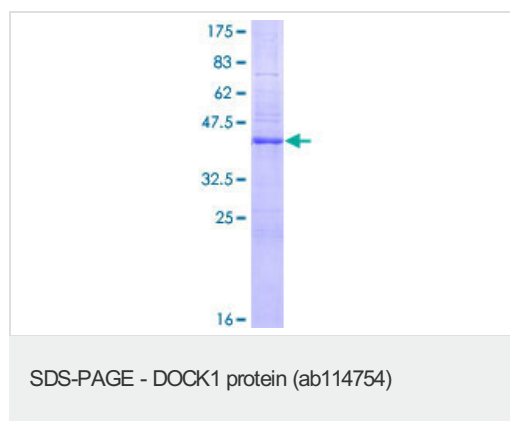
pH: 8.00

Constituents: 0.3% Glutathione, 0.79% Tris HCl

## General Info

<b>Function</b>	Involved in cytoskeletal rearrangements required for phagocytosis of apoptotic cells and cell motility. Functions as a guanine nucleotide exchange factor (GEF), which activates Rac Rho small GTPases by exchanging bound GDP for free GTP. Its GEF activity may be enhanced by ELMO1.
<b>Tissue specificity</b>	Highly expressed in placenta, lung, kidney, pancreas and ovary. Expressed at intermediate level in thymus, testes and colon.
<b>Sequence similarities</b>	Belongs to the DOCK family. Contains 1 DHR-1 (CZH-1) domain. Contains 1 DHR-2 (CZH-2) domain. Contains 1 SH3 domain.
<b>Domain</b>	The DHR-2 domain is necessary and sufficient for the GEF activity.
<b>Cellular localization</b>	Cytoplasm. Membrane. Recruited to membranes via its interaction with phosphatidylinositol 3,4,5-triphosphate.

## Images



12.5% SDS-PAGE Stained with Coomassie  
Blue showing ab114754 at approximately  
42.79kDa.

**Please note:** All products are "FOR RESEARCH USE ONLY AND ARE NOT INTENDED FOR DIAGNOSTIC OR THERAPEUTIC USE"

## Our Abpromise to you: Quality guaranteed and expert technical support

- Replacement or refund for products not performing as stated on the datasheet
- Valid for 12 months from date of delivery
- Response to your inquiry within 24 hours
- We provide support in Chinese, English, French, German, Japanese and Spanish
- Extensive multi-media technical resources to help you
- We investigate all quality concerns to ensure our products perform to the highest standards

If the product does not perform as described on this datasheet, we will offer a refund or replacement. For full details of the Abpromise,

please visit <https://www.abcam.com/abpromise> or contact our technical team.

## **Terms and conditions**

---

- Guarantee only valid for products bought direct from Abcam or one of our authorized distributors