

## Product datasheet

# Recombinant Human EDG3 / S1P3 protein **ab114632**

1 Image

### Overview

<b>Product name</b>	Recombinant Human EDG3 / S1P3 protein
<b>Protein length</b>	Protein fragment

### Description

<b>Nature</b>	Recombinant
<b>Source</b>	Wheat germ
<b>Amino Acid Sequence</b>	
<b>Accession</b>	<a href="#">Q99500</a>
<b>Species</b>	Human
<b>Sequence</b>	SKEMRRAFFRLVCNCLVRGRGARASPIQPALDPSRSK SSSSNSSHSPKV KEDLPHTAPSSCIMDKNAALQNGIFCN
<b>Molecular weight</b>	34 kDa including tags
<b>Amino acids</b>	302 to 378

### Specifications

Our [Abpromise guarantee](#) covers the use of **ab114632** in the following tested applications.

The application notes include recommended starting dilutions; optimal dilutions/concentrations should be determined by the end user.

<b>Applications</b>	ELISA SDS-PAGE Western blot
<b>Form</b>	Liquid
<b>Additional notes</b>	Protein concentration is above or equal to 0.05 mg/ml. This protein is best used within three months from the date of receipt. Previously labelled as EDG3.

### Preparation and Storage

<b>Stability and Storage</b>	Shipped on dry ice. Upon delivery aliquot and store at -80°C. Avoid freeze / thaw cycles.
------------------------------	---

pH: 8.00

Constituents: 0.3% Glutathione, 0.79% Tris HCl

## General Info

---

### Function

Receptor for the lysosphingolipid sphingosine 1-phosphate (S1P). S1P is a bioactive lysophospholipid that elicits diverse physiological effect on most types of cells and tissues. When expressed in rat HTC4 hepatoma cells, is capable of mediating S1P-induced cell proliferation and suppression of apoptosis.

### Tissue specificity

Expressed in all tissues, but most abundantly in heart, placenta, kidney, and liver.

### Sequence similarities

Belongs to the G-protein coupled receptor 1 family.

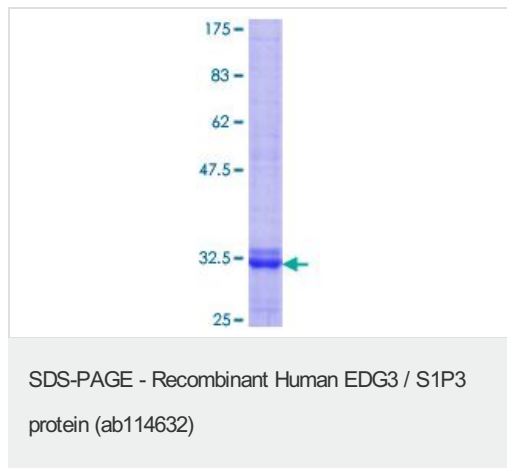
### Cellular localization

Cell membrane.

---

## Images

---



ab114632 analysed by 12.5% SDS-PAGE and stained with Coomassie Blue.

**Please note:** All products are "FOR RESEARCH USE ONLY AND ARE NOT INTENDED FOR DIAGNOSTIC OR THERAPEUTIC USE"

## Our Abpromise to you: Quality guaranteed and expert technical support

---

- Replacement or refund for products not performing as stated on the datasheet
- Valid for 12 months from date of delivery
- Response to your inquiry within 24 hours
- We provide support in Chinese, English, French, German, Japanese and Spanish
- Extensive multi-media technical resources to help you
- We investigate all quality concerns to ensure our products perform to the highest standards

If the product does not perform as described on this datasheet, we will offer a refund or replacement. For full details of the Abpromise, please visit <https://www.abcam.com/abpromise> or contact our technical team.

## Terms and conditions

---

- Guarantee only valid for products bought direct from Abcam or one of our authorized distributors