

## Product datasheet

# Recombinant Human FBXL13 protein ab165986

1 Image

### Overview

|                       |                                  |
|-----------------------|----------------------------------|
| <b>Product name</b>   | Recombinant Human FBXL13 protein |
| <b>Protein length</b> | Full length protein              |

### Description

|               |             |
|---------------|-------------|
| <b>Nature</b> | Recombinant |
| <b>Source</b> | Wheat germ  |

### Amino Acid Sequence

|                    |   |
|--------------------|---|
| <b>Species</b>     | Human   |
| <b>Sequence</b>    | MASLRNANPRLKNYFKENYIPQVCEALLCGILVTCPEDPLRYLEGMIMVI<br>KSGLQNLWDMCITPSMKPNIRRLSEYLEQLFELDDQLMTPELMIKAC<br>SFYTGHLVKTHFCTWRDIARTNENVVLAEKMNRAVTCYNFRLQKSVFHHW<br>HSYMEDQKEKLNMLLRIQQIYCHKLTILTKWRNTARHKSKKKEDELI<br>LKHELQLKKWKNRLLKRAAAEESNFPERSSEVFLVDETLKCDISLLPE<br>RAILQIFFYLSLKDVIICGQVNHAWMLMTQLNSLWNAIDFSSVKNVIPDK<br>YVSTLQRWRLNVLRLNFRGCLLRPKTFRSVSHCRNLQELNVSDCPTFTD<br>ESMRHISEGCPGVLCNLSNTTITNRTMRLPRHFHNLQNSLAYCRRFT<br>DKGLQYLNLDGNGCHKLMLDLSGCTQISVQGFRIANSCTGIMHLTINDM<br>PTLTDNCVKALVEKCSRITSLVFTGAPHISDCTFRALSACKLRKIRFEGN<br>KRVTDA SFKFIDKNYPNL SHYMADCKGITDSSLRSLSPKQLTVLNLAN<br>CVRIGDMGLKQFLDGPASMRIRELNLSNCVRLSDASVMKLSERCPNLNYL<br>SLRNCEHLTAQGIGYVNFSLVSLDLSGTDISNEGLNVLSRHKKLKELS<br>VSECYRITDDGIQIARMEASANKEGLPKTPIADY |
| <b>Amino acids</b> | 1 to 684  |
| <b>Tags</b>        | proprietary tag N-Terminus  |

### Specifications

Our [Abpromise guarantee](#) covers the use of **ab165986** in the following tested applications.

The application notes include recommended starting dilutions; optimal dilutions/concentrations should be determined by the end user.

|                     |                       |
|---------------------|-----------------------|
| <b>Applications</b> | Western blot<br>ELISA |
|---------------------|-----------------------|

|                         |  |
|-------------------------|--|
| <b>Form</b>             | Liquid   |
| <b>Additional notes</b> | Protein concentration is above or equal to 0.05 mg/ml. |

## Preparation and Storage

---

|                              |  |
|------------------------------|--|
| <b>Stability and Storage</b> | Shipped on dry ice. Upon delivery aliquot and store at -80°C. Avoid freeze / thaw cycles.<br>pH: 8.00<br>Constituents: 0.31% Glutathione, 0.79% Tris HCl |
|------------------------------|--|

## General Info

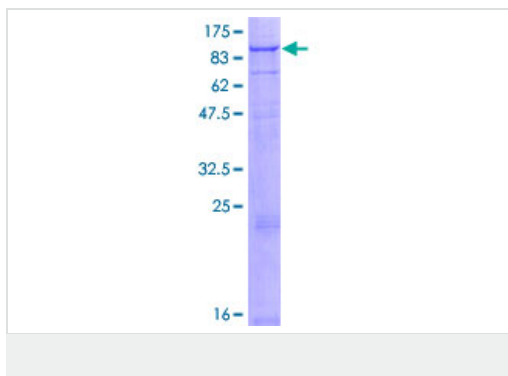
---

|                              |  |
|------------------------------|--|
| <b>Function</b>              | Substrate-recognition component of the SCF (SKP1-CUL1-F-box protein)-type E3 ubiquitin ligase complex. |
| <b>Sequence similarities</b> | Contains 1 F-box domain.<br>Contains 17 LRR (leucine-rich) repeats.                                    |

---

## Images

---



ab165986 on a 12.5% SDS-PAGE stained with Coomassie Blue.

**Please note:** All products are "FOR RESEARCH USE ONLY AND ARE NOT INTENDED FOR DIAGNOSTIC OR THERAPEUTIC USE"

## Our Abpromise to you: Quality guaranteed and expert technical support

---

- Replacement or refund for products not performing as stated on the datasheet
- Valid for 12 months from date of delivery
- Response to your inquiry within 24 hours
- We provide support in Chinese, English, French, German, Japanese and Spanish
- Extensive multi-media technical resources to help you
- We investigate all quality concerns to ensure our products perform to the highest standards

If the product does not perform as described on this datasheet, we will offer a refund or replacement. For full details of the Abpromise, please visit <https://www.abcam.com/abpromise> or contact our technical team.

## Terms and conditions

---

- Guarantee only valid for products bought direct from Abcam or one of our authorized distributors