

Product datasheet

Recombinant Human FBXL5 protein ab132763

1 Image

Overview

<b>Product name</b>	Recombinant Human FBXL5 protein
<b>Protein length</b>	Full length protein

Description

<b>Nature</b>	Recombinant
<b>Source</b>	Wheat germ
<b>Amino Acid Sequence</b>	
<b>Accession</b>	<a href="#">Q9UKA1</a>
<b>Species</b>	Human

Sequence

MAPFPEEVDVFTAPHWRMKQLVGLYCDKLSKTNFSN  
 NNDFRALLQSLYAT  
 FTEFKMHEQIENEYIIGLLQQRSQTIYNVHSDNKLSEMLS  
 LFEKGLKNVK  
 NEYEQLNYAKQLKERLEAFTRDFLPHMKEEEVFQPM  
 LMEYFTYEELKDI  
 KKKVIAQHCSQKDTAELLRGLSLWNHAEERQKFFKYS  
 VDEKSDKEAEVSE  
 HSTGITHLPPEVMLSIFSYLNPQELCRCSQVSMKWSQL  
 TKTRSLWKHLYP  
 VHWARGDWYSGPATELDTEPDDEWVKNRKDESRAF  
 HEWDEDADIDEESES  
 AEESIAISIAQMEKRLHGLIHNVLPHYVGTSVKTLVLAYS  
 SAVSSKMVRQ  
 ILELCPNLEHLDLTQTDISDSAFDSWSWLGCCQSLRHL  
 DLSGCEKITDVA  
 LEKISRALGILTSHQSGFLKTSTSKITSTAWKNKDITMQS  
 TKQYACLHDL  
 TNKGIGEEIDNEHPWTKPVSSNFSTSPYVWMLDAEDL  
 ADIEDTVEWRHRN  
 VESLCVMETASNFSCSTSGCFSKDMGLRTSVCWQQ  
 HCASPAFAYCGHSF  
 CCTGTALRTMSSLPESSAMCRKAARTRLPKGDLYF  
 GSEKSDQETGRVL  
 LFLSLSGCYQITDHGLRVLTGGGLPYLEHLNLSGCLTIT

GAGLQDLVSA  
CPSLNDEYFYCDNINGPHADTASGCQNLQCGFRACC  
RSGE

**Molecular weight** 105 kDa  
**Amino acids** 1 to 691

## Specifications

---

Our [Abpromise guarantee](#) covers the use of **ab132763** in the following tested applications.

The application notes include recommended starting dilutions; optimal dilutions/concentrations should be determined by the end user.

**Applications** SDS-PAGE  
ELISA  
Western blot

**Form** Liquid

**Additional notes** Protein concentration is above or equal to 0.05 µg/µl.

## Preparation and Storage

---

**Stability and Storage** Shipped on dry ice. Upon delivery aliquot and store at -80°C. Avoid freeze / thaw cycles.  
pH: 8.00  
Constituents: 0.31% Glutathione, 0.79% Tris HCl

## General Info

---

**Function** Component of some SCF (SKP1-cullin-F-box) protein ligase complex that plays a central role in iron homeostasis by promoting the ubiquitination and subsequent degradation of IREB2/IRP2. Upon high iron and oxygen level, it specifically recognizes and binds IREB2/IRP2, promoting its ubiquitination and degradation by the proteasome. Promotes ubiquitination and subsequent degradation of DCTN1/p150-glued.

**Pathway** Protein modification; protein ubiquitination.

**Sequence similarities** Contains 1 F-box domain.  
Contains 7 LRR (leucine-rich) repeats.

**Domain** The hemerythrin-like region acts as an oxygen and iron sensor by binding oxygen through a diiron metal-center. In absence of oxygen and iron, the protein is ubiquitinated and degraded.

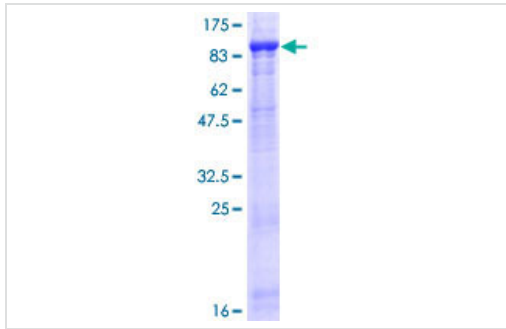
**Post-translational modifications** Ubiquitinated upon iron and oxygen depletion, leading to its degradation by the proteasome. Ubiquitination is regulated by the hemerythrin-like region that acts as an oxygen and iron sensor.

**Cellular localization** Cytoplasm > perinuclear region.

---

## Images

---



12.5% SDS-PAGE analysis of ab132763 stained with Coomassie Blue.

SDS-PAGE - Recombinant Human FBXL5 protein  
(ab132763)

**Please note:** All products are "FOR RESEARCH USE ONLY AND ARE NOT INTENDED FOR DIAGNOSTIC OR THERAPEUTIC USE"

### Our Abpromise to you: Quality guaranteed and expert technical support

---

- Replacement or refund for products not performing as stated on the datasheet
- Valid for 12 months from date of delivery
- Response to your inquiry within 24 hours
  
- We provide support in Chinese, English, French, German, Japanese and Spanish
- Extensive multi-media technical resources to help you
- We investigate all quality concerns to ensure our products perform to the highest standards

If the product does not perform as described on this datasheet, we will offer a refund or replacement. For full details of the Abpromise, please visit <https://www.abcam.com/abpromise> or contact our technical team.

### Terms and conditions

---

- Guarantee only valid for products bought direct from Abcam or one of our authorized distributors