

Product datasheet

Recombinant Human FXR1 protein ab152840

1 Image

Overview

Product name	Recombinant Human FXR1 protein
Protein length	Protein fragment

Description

Nature	Recombinant
Source	Wheat germ
Amino Acid Sequence	
Accession	P51114
Species	Human
Sequence	VKKNTFFKCTVDVPEDLREACANENAHKDFKKA VGA CRIFYHPETTQLMI LSASEATVKRVNILSDMHLRSIRTKLMLMSRNEEATKH LECTKQLAAAFH
Molecular weight	37 kDa including tags
Amino acids	121 to 220

Specifications

Our [Abpromise guarantee](#) covers the use of **ab152840** in the following tested applications.

The application notes include recommended starting dilutions; optimal dilutions/concentrations should be determined by the end user.

Applications	ELISA Western blot SDS-PAGE
Form	Liquid
Additional notes	Protein concentration is above or equal to 0.05 µg/µl.

Preparation and Storage

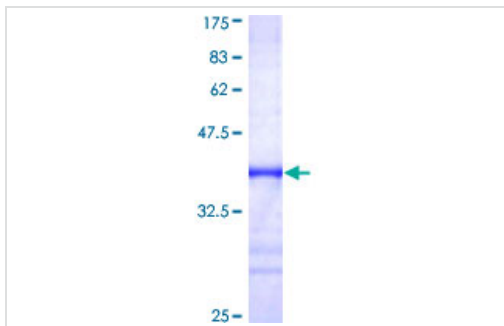
Stability and Storage	Shipped on dry ice. Upon delivery aliquot and store at -80°C. Avoid freeze / thaw cycles. pH: 8.00
------------------------------	-------------------------------------------------------------------------------------------------------

Constituents: 0.31% Glutathione, 0.79% Tris HCl

General Info

Function	RNA-binding protein required for embryonic and postnatal development of muscle tissue. May regulate intracellular transport and local translation of certain mRNAs.
Tissue specificity	Expressed in all tissues examined including heart, brain, kidney and testis.
Sequence similarities	Belongs to the FMR1 family. Contains 2 KH domains.
Post-translational modifications	Arg-445 is dimethylated, probably to asymmetric dimethylarginine.
Cellular localization	Cytoplasm.

Images



12.5% SDS-PAGE analysis of ab152840 stained with Coomassie Blue.

SDS-PAGE - Recombinant Human FXR1 protein
(ab152840)

Please note: All products are "FOR RESEARCH USE ONLY AND ARE NOT INTENDED FOR DIAGNOSTIC OR THERAPEUTIC USE"

Our Abpromise to you: Quality guaranteed and expert technical support

- Replacement or refund for products not performing as stated on the datasheet
- Valid for 12 months from date of delivery
- Response to your inquiry within 24 hours
- We provide support in Chinese, English, French, German, Japanese and Spanish
- Extensive multi-media technical resources to help you
- We investigate all quality concerns to ensure our products perform to the highest standards

If the product does not perform as described on this datasheet, we will offer a refund or replacement. For full details of the Abpromise, please visit <https://www.abcam.com/abpromise> or contact our technical team.

Terms and conditions

- Guarantee only valid for products bought direct from Abcam or one of our authorized distributors