

Product datasheet

Recombinant Human HCLS1 protein ab116927

1 Image

Overview

---

**Product name** Recombinant Human HCLS1 protein  
**Protein length** Protein fragment

Description

---

**Nature** Recombinant  
**Source** Wheat germ

Amino Acid Sequence

**Accession** [P14317](#)  
**Species** Human  
**Sequence** QERKAVTKRSPEAPQPVIAMEEPAVPAPLPKKISSEAWPPVGTPPSSESE  
 PVRTSREHPVPLLPIRQTLPEDNEEPPALPPRTLEGLQVE  
**Molecular weight** 36 kDa including tags  
**Amino acids** 266 to 355

Specifications

---

Our [Abpromise guarantee](#) covers the use of **ab116927** in the following tested applications.

The application notes include recommended starting dilutions; optimal dilutions/concentrations should be determined by the end user.

**Applications** ELISA  
 SDS-PAGE  
 Western blot

**Form** Liquid

**Additional notes** Protein concentration is above or equal to 0.05 mg/ml.  
 Best use within three months from the date of receipt of this protein.

Preparation and Storage

---

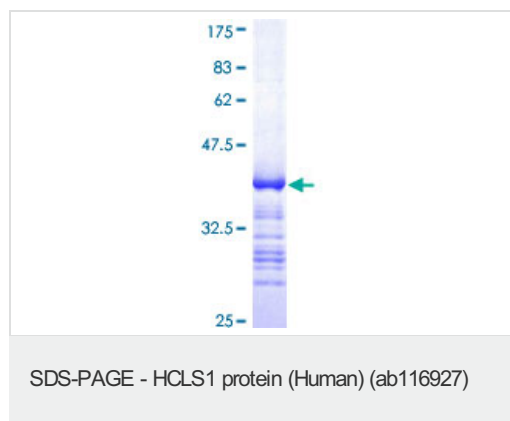
**Stability and Storage** Shipped on dry ice. Upon delivery aliquot and store at -80°C. Avoid freeze / thaw cycles.  
 pH: 8.00

Constituents: 0.3% Glutathione, 0.79% Tris HCl

## General Info

<b>Function</b>	Substrate of the antigen receptor-coupled tyrosine kinase. Plays a role in antigen receptor signaling for both clonal expansion and deletion in lymphoid cells. May also be involved in the regulation of gene expression.
<b>Tissue specificity</b>	Expressed only in tissues and cells of hematopoietic origin.
<b>Sequence similarities</b>	Contains 4 cortactin repeats. Contains 1 SH3 domain.
<b>Developmental stage</b>	Expressed in early stage of myeloid and erythroid differentiation.
<b>Post-translational modifications</b>	Phosphorylated by LYN; rapidly after cross-linking of surface IgM on B-cells.
<b>Cellular localization</b>	Membrane. Cytoplasm. Mitochondrion.

## Images



12.5% SDS-PAGE stained with Coomassie  
Blue showing ab116927 at approximately  
35.53 kDa.

**Please note:** All products are "FOR RESEARCH USE ONLY AND ARE NOT INTENDED FOR DIAGNOSTIC OR THERAPEUTIC USE"

## Our Abpromise to you: Quality guaranteed and expert technical support

- Replacement or refund for products not performing as stated on the datasheet
- Valid for 12 months from date of delivery
- Response to your inquiry within 24 hours
- We provide support in Chinese, English, French, German, Japanese and Spanish
- Extensive multi-media technical resources to help you
- We investigate all quality concerns to ensure our products perform to the highest standards

If the product does not perform as described on this datasheet, we will offer a refund or replacement. For full details of the Abpromise, please visit <https://www.abcam.com/abpromise> or contact our technical team.

## Terms and conditions

- Guarantee only valid for products bought direct from Abcam or one of our authorized distributors