

Product datasheet

Recombinant Human IRAK-1 protein ab114271

1 Image

Overview

Product name	Recombinant Human IRAK-1 protein
Protein length	Full length protein

Description

Nature	Recombinant
Source	Wheat germ

Amino Acid Sequence

Accession	Q96C06
Species	Human
Sequence	MAGGPGGPEPAAPGAQHFLYEVPWVMCRFYKVMDALEPADWCQFAALIM RDQTELRLCERSGQRTASVLWPWINRNARVADLVHILHLQLLRARDIIT AWHPPAPLPSPGTTAPRPSSIPAPAEAEAWSPRKLPSASTFLSPAFPGS QTHSGPELGLVPSASLWPPPPSPAPSSTKPGPESSVLLQGARPSDFCW PLCEISRGTHNFSEELKIGEGGFCVYRAVMRNTVYAVKRLKENADLEWT AVKQSFLTEVEQLSRFRHPNMDFAGYCAQNGFYCLVYGFLPNGSLEDRL HCQTQACPPLSWPQRDLILLGTARAIQFLHQDSPSLIHGDIKSSNVLLDE RLTPKLGDFGLARFSRFAGSSPSQSSMVARTQTVRGTLAYLPEEYIKTGR LAVDTDTFSGVVVLETLAQRAVKTHGARTKYLVERLEKLQAVVAGVP GHLEAASCIPPSPQENSYSSTGRAHSGAAPWQPLAAPSGASQAQAEQLQ RGNPQVESDESGLGSLAALRSWHLTPSCPLDPAPLREAGCPQGDGTAGES SWGSGPGSRPTAVEGLALGSSASSSSEPPQIIINPARQKMOVQKLALYEDG ALDSLQLLSSSSLPGLGLEQDRQGPEESDEFQS

Molecular weight	96 kDa including tags
Amino acids	1 to 633

Specifications

Our [Abpromise guarantee](#) covers the use of **ab114271** in the following tested applications.

The application notes include recommended starting dilutions; optimal dilutions/concentrations should be determined by the end user.

Applications	ELISA SDS-PAGE
---------------------	-------------------

Western blot

Form

Liquid

Additional notes

Protein concentration is above or equal to 0.05 mg/ml.
Best used within three months from the date of receipt.

Preparation and Storage

Stability and Storage

Shipped on dry ice. Upon delivery aliquot and store at -80°C. Avoid freeze / thaw cycles.

pH: 8.00

Constituents: 0.3% Glutathione, 0.79% Tris HCl

General Info

Function

Binds to the IL-1 type I receptor following IL-1 engagement, triggering intracellular signaling cascades leading to transcriptional up-regulation and mRNA stabilization. Isoform 1 binds rapidly but is then degraded allowing isoform 2 to mediate a slower, more sustained response to the cytokine. Isoform 2 is inactive suggesting that the kinase activity of this enzyme is not required for IL-1 signaling. Once phosphorylated, IRAK1 recruits the adapter protein PELI1.

Tissue specificity

Isoform 1 and isoform 2 are ubiquitously expressed in all tissues examined, with isoform 1 being more strongly expressed than isoform 2.

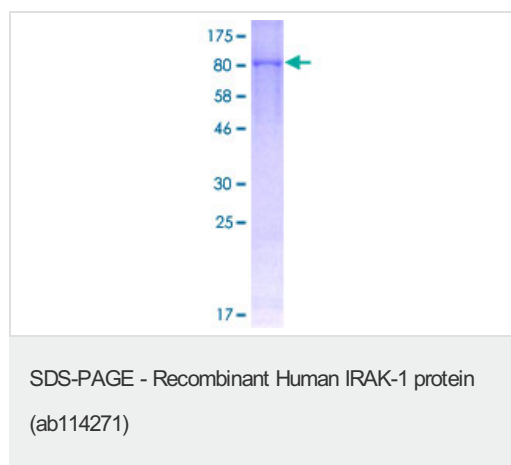
Sequence similarities

Belongs to the protein kinase superfamily. TKL Ser/Thr protein kinase family. Pelle subfamily. Contains 1 protein kinase domain.

Post-translational modifications

Autophosphorylated or is transphosphorylated by IRAK4 following recruitment to the IL-1RI. In the case of isoform 1, this is linked to ubiquitination and degradation.
Polyubiquitinated; after cell stimulation with IL-1-beta. Polyubiquitination occurs with polyubiquitin chains linked through 'Lys-63'.

Images



12.5% SDS-PAGE analysis of ab114271 stained with Coomassie Blue.

Please note: All products are "FOR RESEARCH USE ONLY AND ARE NOT INTENDED FOR DIAGNOSTIC OR THERAPEUTIC USE"

Our Abpromise to you: Quality guaranteed and expert technical support

- Replacement or refund for products not performing as stated on the datasheet
- Valid for 12 months from date of delivery
- Response to your inquiry within 24 hours

- We provide support in Chinese, English, French, German, Japanese and Spanish
- Extensive multi-media technical resources to help you
- We investigate all quality concerns to ensure our products perform to the highest standards

If the product does not perform as described on this datasheet, we will offer a refund or replacement. For full details of the Abpromise, please visit <https://www.abcam.com/abpromise> or contact our technical team.

Terms and conditions

- Guarantee only valid for products bought direct from Abcam or one of our authorized distributors