

Product datasheet

Recombinant Human Integrin alpha E protein ab114703

[1 Image](#)

Overview

| | |
|-----------------------|--|
| Product name | Recombinant Human Integrin alpha E protein |
| Protein length | Protein fragment |

Description

| | |
|---------------|-------------|
| Nature | Recombinant |
| Source | Wheat germ |

Amino Acid Sequence

| | |
|-------------------------|---|
| Accession | P38570 |
| Species | Human |
| Sequence | SPRTKRTPGPLHRCSLVQDEILCHPVEHVPIPKGRHRGVTVVRSHHGVLICIQVLVRRPHSLSSELTGTCSSLGPDLRPQAQANFFDLENLLDPDARVDTGDCYSNKEGGGEDDV |
| Molecular weight | 38 kDa including tags |
| Amino acids | 57 to 171 |

Specifications

Our [Abpromise guarantee](#) covers the use of **ab114703** in the following tested applications.

The application notes include recommended starting dilutions; optimal dilutions/concentrations should be determined by the end user.

| | |
|-------------------------|--|
| Applications | ELISA SDS-PAGE Western blot |
| Form | Liquid |
| Additional notes | Protein concentration is above or equal to 0.05 mg/ml. |

Preparation and Storage

| | |
|------------------------------|---|
| Stability and Storage | Shipped on dry ice. Upon delivery aliquot and store at -80°C. Avoid freeze / thaw cycles. |
|------------------------------|---|

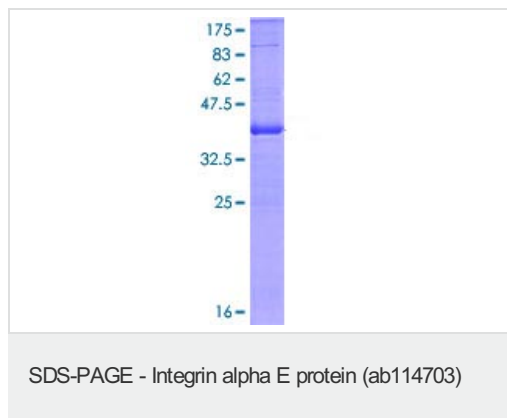
pH: 8.00

Constituents: 0.3% Glutathione, 0.79% Tris HCl

General Info

| | |
|------------------------------|---|
| Function | Integrin alpha-E/beta-7 is a receptor for E-cadherin. It mediates adhesion of intra-epithelial T-lymphocytes to epithelial cell monolayers. |
| Tissue specificity | Expressed on a subclass of T-lymphocytes known as intra-epithelial lymphocytes which are located between mucosal epithelial cells. |
| Sequence similarities | Belongs to the integrin alpha chain family. Contains 7 FG-GAP repeats. Contains 1 VWFA domain. |
| Domain | The integrin I-domain (insert) is a VWFA domain. Integrins with I-domains do not undergo protease cleavage. |
| Cellular localization | Membrane. |

Images



12.5% SDS-PAGE showing ab114703 at approximately 38.28 kDa stained with Coomassie Blue.

Please note: All products are "FOR RESEARCH USE ONLY AND ARE NOT INTENDED FOR DIAGNOSTIC OR THERAPEUTIC USE"

Our Abpromise to you: Quality guaranteed and expert technical support

- Replacement or refund for products not performing as stated on the datasheet
- Valid for 12 months from date of delivery
- Response to your inquiry within 24 hours
- We provide support in Chinese, English, French, German, Japanese and Spanish
- Extensive multi-media technical resources to help you
- We investigate all quality concerns to ensure our products perform to the highest standards

If the product does not perform as described on this datasheet, we will offer a refund or replacement. For full details of the Abpromise, please visit <https://www.abcam.com/abpromise> or contact our technical team.

Terms and conditions

- Guarantee only valid for products bought direct from Abcam or one of our authorized distributors