

Product datasheet

Recombinant Human KCNN3 protein ab152490

1 Image

Overview

<b>Product name</b>	Recombinant Human KCNN3 protein
<b>Protein length</b>	Full length protein

Description

<b>Nature</b>	Recombinant
<b>Source</b>	Wheat germ

Amino Acid Sequence

<b>Accession</b>	<a href="#">Q9UGI6-2</a>
<b>Species</b>	Human
<b>Sequence</b>	MERPIKDSMFSLALKCLISLSTIILLGLIIAYHTREVQLFVIDNGADDWR IAMTYERILYISLEMLVCAIHPGEYKFFWTARLAFSYTPSRAEADVDI ILSIPMFLRLYLARVMLLHSKLFTDASSRSIGALNKINFNTRFVMKTLM TICPGTVLLVFSISLWIAAWTVRVVCERYHDQQDVTSNFLGAMWLISITF LSIGYGDMVPHTYCGKGVCLLTGIMGAGCTALVVAVVARKLELTKAEKHV HNFMMDTQLTKRIKNAANVLRWTWLYKHTKLLKKIDHAKVRKHQRKFL QAIHQLRSVKMEQRKLSQANTLVDLSKMQNVMYDLITELNDRSEDLEKQ IGSLESKLEHLTASFNSLPLLIADTLRQQQQQLLSAIEARGVSVAVGTT HTPISDSPIGVSSTSFPTPYTSSSSC
<b>Molecular weight</b>	73 kDa including tags
<b>Amino acids</b>	1 to 426

Specifications

Our [Abpromise guarantee](#) covers the use of **ab152490** in the following tested applications.

The application notes include recommended starting dilutions; optimal dilutions/concentrations should be determined by the end user.

<b>Applications</b>	ELISA
	SDS-PAGE
	Western blot

<b>Form</b>	Liquid
-------------	--------

<b>Additional notes</b>	Protein concentration is above or equal to 0.05 µg/µl.
-------------------------	--

## Preparation and Storage

### Stability and Storage

Shipped on dry ice. Upon delivery aliquot and store at -80°C. Avoid freeze / thaw cycles.

pH: 8.00

Constituents: 0.31% Glutathione, 0.79% Tris HCl

## General Info

### Function

Forms a voltage-independent potassium channel activated by intracellular calcium. Activation is followed by membrane hyperpolarization. Thought to regulate neuronal excitability by contributing to the slow component of synaptic afterhyperpolarization. The channel is blocked by apamin.

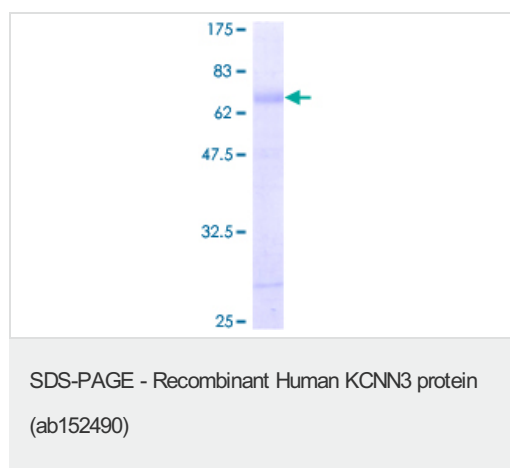
### Sequence similarities

Belongs to the potassium channel KCNN family, KCa2.3/KCNN3 subfamily.

### Cellular localization

Membrane.

## Images



12.5% SDS-PAGE analysis of ab152490 stained with Coomassie Blue.

**Please note:** All products are "FOR RESEARCH USE ONLY AND ARE NOT INTENDED FOR DIAGNOSTIC OR THERAPEUTIC USE"

## Our Abpromise to you: Quality guaranteed and expert technical support

- Replacement or refund for products not performing as stated on the datasheet
- Valid for 12 months from date of delivery
- Response to your inquiry within 24 hours
- We provide support in Chinese, English, French, German, Japanese and Spanish
- Extensive multi-media technical resources to help you
- We investigate all quality concerns to ensure our products perform to the highest standards

If the product does not perform as described on this datasheet, we will offer a refund or replacement. For full details of the Abpromise, please visit <https://www.abcam.com/abpromise> or contact our technical team.

## Terms and conditions

- Guarantee only valid for products bought direct from Abcam or one of our authorized distributors