

Product datasheet

Recombinant Human LARS2 protein ab161621

1 Image

Overview

Product name	Recombinant Human LARS2 protein
Protein length	Full length protein

Description

Nature	Recombinant
Source	Wheat germ

Amino Acid Sequence

Species	Human
Sequence	MASVWQRLGFYASLLKRQLNGGPDVIKWERRVIPGCTRSIYSATGKWTKE YTLQTRKDVEKWWHQRIKEQASKISEADKSKPKFYVLSMFPYPSGKLHMG HVRVYTISDTIARFQKMRGMQVINPMGWDAFGLPAENAAVERNLHPQSWT QSNIKHMRKQLDRLGLCFSWDREITTCLPDYKWTQYLFIKLYEAGLAYQ KEALVNWDPVDQTVLANEQVDEHGCSWRSGAKVEQKYLQWFIKTTAYAK AMQDALADLPEWYGIKGMQAHWIGDCVGCCHLDFTLKVHGQATGEKLTAYT ATPEAYGTSHVAISPSHRLHGHSSLKEALRMALVPGKDCLTPVMAVNM LTQQEVPVVILAKADLEGSLDSKIGIPSTSSDILAQTLGLAYSEVIET LPDGTERLSSSAEFTGMTRQDAFLALTQKARGKRVGGDVTSDKLDWLS RQRYWGTPIPIVHCPVCGPTPVPLEDLPVTLPNIASFTGKGGPPLAMASE WVNCSCPRCKGAAKRETDMDTFVDSAWYYFRYTDPHNPHSPFNTAVADY WMPVDLYIGGKEHAVMHLFYARFFSHFCHDQKMVKHREPFHKLLAQGLIK GQTFRLPSGQYLQREEVDLTGSVPVHAKTKEKLEVTWEKMSKSKHNGVDP EEVVEQYGIDTIRLYILFAAPPEKDILWDVKTALPGVLRWQQRLWTLTT RFIARASGKSPQPQLLSNKEKAEARKLWEYKNSVISQVTTHTFTEDFSLN SAISQLMGLSNALSQASQSVILHSPEFEDALCALMVMAAPLAPHVTSEM AGLALVPRKLCAYTWDASVLLQAWPAVDPEFLQQPEVVQMAVLINNKAC GKIPVPQQVARDQDKVHEFVLQSELGVRLLQGRSIKKSFLSPRTALINFL VQD
Amino acids	1 to 903
Tags	proprietary tag N-Terminus

Specifications

Our [Abpromise guarantee](#) covers the use of **ab161621** in the following tested applications.

The application notes include recommended starting dilutions; optimal dilutions/concentrations should be determined by the end user.

Applications	ELISA Western blot
Form	Liquid
Additional notes	Protein concentration is above or equal to 0.05 mg/ml.

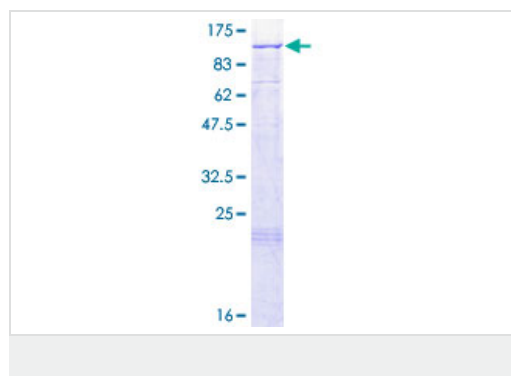
Preparation and Storage

Stability and Storage	Shipped on dry ice. Upon delivery aliquot and store at -80°C. Avoid freeze / thaw cycles. pH: 8.00 Constituents: 0.31% Glutathione, 0.79% Tris HCl
------------------------------	--

General Info

Sequence similarities	Belongs to the class-I aminoacyl-tRNA synthetase family.
Cellular localization	Mitochondrion matrix.

Images



ab161621 on a 12.5% SDS-PAGE stained with Coomassie Blue.

Please note: All products are "FOR RESEARCH USE ONLY AND ARE NOT INTENDED FOR DIAGNOSTIC OR THERAPEUTIC USE"

Our Abpromise to you: Quality guaranteed and expert technical support

- Replacement or refund for products not performing as stated on the datasheet
- Valid for 12 months from date of delivery
- Response to your inquiry within 24 hours
- We provide support in Chinese, English, French, German, Japanese and Spanish
- Extensive multi-media technical resources to help you
- We investigate all quality concerns to ensure our products perform to the highest standards

If the product does not perform as described on this datasheet, we will offer a refund or replacement. For full details of the Abpromise, please visit <https://www.abcam.com/abpromise> or contact our technical team.

Terms and conditions

- Guarantee only valid for products bought direct from Abcam or one of our authorized distributors