

Product datasheet

Recombinant Human LIMS1 protein ab116807

1 Image

Overview

Product name	Recombinant Human LIMS1 protein
Protein length	Full length protein

Description

Nature	Recombinant
Source	Wheat germ

Amino Acid Sequence

Accession	P48059
Species	Human
Sequence	MANALASATCERCKGGFAPAEEKIVNSNGELYHEQCFVCAQCFQQFPEGLF YEFEGRKYCEHDFQMLFAPCCHQCGEFIIGRVIKAMNNSWHPECFRCDLC QEVLADIGFVKNAGRHLCRPCHNREKARGLGKYICQKCHAIIDEQPLIFK NDPYHPDHFNCANCGKELTADARELKGELYCLPCHDKMGVPCGACRRPI EGRVVNAMGKQWHVEHFVCAKCEKPFLGHRHYERKGLAYCETHYNQLFGD VCFHCNRVIEGDVVSALNKAWCVNCFACSTCNTKLTCLKNFVEFDMKPVC KKCYEKFPLELKKRLKLAETLGRK

Molecular weight	62 kDa including tags
Amino acids	1 to 325
Tags	GST tag N-Terminus

Specifications

Our [Abpromise guarantee](#) covers the use of **ab116807** in the following tested applications.

The application notes include recommended starting dilutions; optimal dilutions/concentrations should be determined by the end user.

Applications	ELISA Western blot SDS-PAGE
Form	Liquid
Additional notes	This protein is best used within three months from the date of receipt.

Preparation and Storage

Stability and Storage

Shipped on dry ice. Upon delivery aliquot and store at -80°C. Avoid freeze / thaw cycles.

pH: 8.00

Constituents: 0.79% Tris HCl, 0.3% Glutathione

General Info

Function

Effector of integrin and growth factor signaling, coupling surface receptors to downstream signaling molecules involved in the regulation of cell survival, cell proliferation and cell differentiation. Focal adhesion protein part of the complex ILK-PINCH. This complex is considered to be one of the convergence points of integrin- and growth factor-signaling pathway.

Tissue specificity

Expressed in most tissues except in the brain.

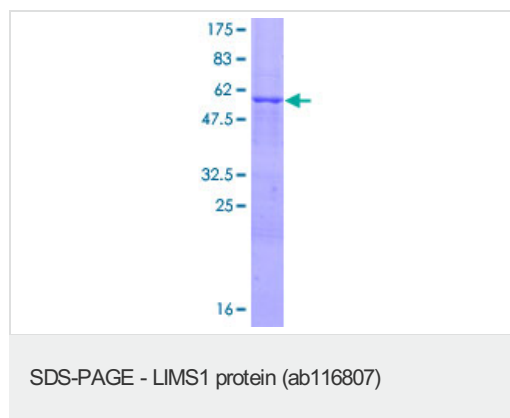
Sequence similarities

Contains 5 LIM zinc-binding domains.

Cellular localization

Cell junction > focal adhesion. Cell membrane.

Images



12.5% SDS-PAGE showing ab116807 at approximately 61.82kDa.

Stained with Coomassie Blue.

Please note: All products are "FOR RESEARCH USE ONLY AND ARE NOT INTENDED FOR DIAGNOSTIC OR THERAPEUTIC USE"

Our Abpromise to you: Quality guaranteed and expert technical support

- Replacement or refund for products not performing as stated on the datasheet
- Valid for 12 months from date of delivery
- Response to your inquiry within 24 hours

- We provide support in Chinese, English, French, German, Japanese and Spanish
- Extensive multi-media technical resources to help you
- We investigate all quality concerns to ensure our products perform to the highest standards

If the product does not perform as described on this datasheet, we will offer a refund or replacement. For full details of the Abpromise, please visit <https://www.abcam.com/abpromise> or contact our technical team.

Terms and conditions

- Guarantee only valid for products bought direct from Abcam or one of our authorized distributors