

Product datasheet

Recombinant Human MPP1 protein ab160559

1 Image

Overview

Product name	Recombinant Human MPP1 protein
Protein length	Protein fragment

Description

Nature	Recombinant
Source	Wheat germ
Amino Acid Sequence	
Species	Human
Sequence	RSQASIIGVNLATKKKEGTLQKFGDFLQHSPSILQSKAK KIETMSSSKL SNVEASKENVSQPKRAKRKLYTSEISSPIDISGQVILMD QKMKESDHQII KRRLRTKTAK
Amino acids	1671 to 1780
Tags	proprietary tag N-Terminus

Specifications

Our [Abpromise guarantee](#) covers the use of **ab160559** in the following tested applications.

The application notes include recommended starting dilutions; optimal dilutions/concentrations should be determined by the end user.

Applications	ELISA Western blot
Form	Liquid
Additional notes	Protein concentration is above or equal to 0.05 mg/ml. Protein previously labeled as KIF20B.

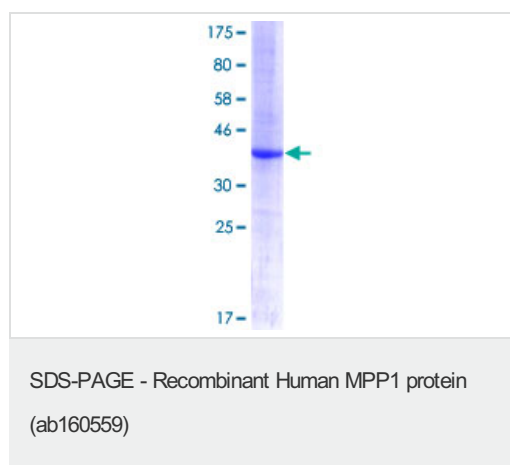
Preparation and Storage

Stability and Storage	Shipped on dry ice. Upon delivery aliquot and store at -80°C. Avoid freeze / thaw cycles. pH: 8.00 Constituents: 0.31% Glutathione, 0.79% Tris HCl
------------------------------	----------------------------------------------------------------------------------------------------------------------------------------------------------

General Info

Function	Plus-end-directed motor enzyme that is required for completion of cytokinesis.
Tissue specificity	Brain, ovary, kidney and testis.
Sequence similarities	Belongs to the kinesin-like protein family. Contains 1 kinesin-motor domain.
Post-translational modifications	Phosphorylated upon DNA damage, probably by ATM or ATR.
Cellular localization	Cytoplasm. Nucleus. Cytoplasm > cytoskeleton > spindle. Localizes mainly in the nucleus during interphase although it is also detected in the cytoplasm without clear association with microtubules. A 2-3 fold expression increase is seen as cells progress from G1 to G2/M phase. During prophase and metaphase it is found throughout the cytoplasm and at anaphase accumulates at the midplan of the cell and forms a distinct band extending across the spindle midzone. At anaphase it is concentrated in the mid-body.

Images



ab160559 on a 12.5% SDS-PAGE stained with Coomassie Blue.

Please note: All products are "FOR RESEARCH USE ONLY AND ARE NOT INTENDED FOR DIAGNOSTIC OR THERAPEUTIC USE"

Our Abpromise to you: Quality guaranteed and expert technical support

- Replacement or refund for products not performing as stated on the datasheet
- Valid for 12 months from date of delivery
- Response to your inquiry within 24 hours
- We provide support in Chinese, English, French, German, Japanese and Spanish
- Extensive multi-media technical resources to help you
- We investigate all quality concerns to ensure our products perform to the highest standards

If the product does not perform as described on this datasheet, we will offer a refund or replacement. For full details of the Abpromise, please visit <https://www.abcam.com/abpromise> or contact our technical team.

Terms and conditions

- Guarantee only valid for products bought direct from Abcam or one of our authorized distributors