

Product datasheet

Recombinant Human MST1 protein ab116865

1 Image

Overview

Product name	Recombinant Human MST1 protein
Protein length	Protein fragment

Description

Nature	Recombinant
Source	Wheat germ

Amino Acid Sequence

Accession	P26927
Species	Human
Sequence	QRSPLNDFQVLRGTELQHLLHAVVPGPWQEDVADAEECAGRCGPLMDCRA FHYNVSSHGCQLLPWTQHSPHTRLRRSGRCDLFQKKDYVRTCIMNNGVGY RG
Molecular weight	37 kDa including tags
Amino acids	19 to 120

Specifications

Our [Abpromise guarantee](#) covers the use of **ab116865** in the following tested applications.

The application notes include recommended starting dilutions; optimal dilutions/concentrations should be determined by the end user.

Applications	ELISA SDS-PAGE Western blot
Form	Liquid
Additional notes	Protein concentration is above or equal to 0.05 mg/ml. Best use within three months from the date of receipt of this protein.

Preparation and Storage

Stability and Storage	Shipped on dry ice. Upon delivery aliquot and store at -80°C. Avoid freeze / thaw cycles.
------------------------------	---

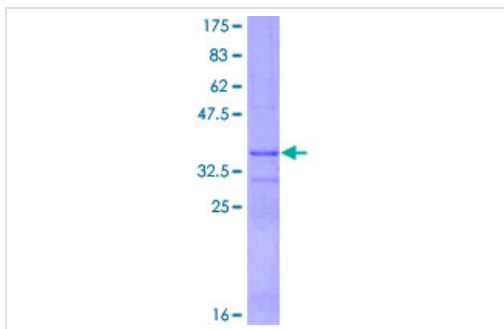
pH: 8.00

Constituents: 0.3% Glutathione, 0.79% Tris HCl

General Info

Function	Probably has no proteolytic activity, since crucial characteristic of serine proteases catalytic sites are not conserved.
Sequence similarities	Belongs to the peptidase S1 family. Plasminogen subfamily. Contains 4 kringle domains. Contains 1 PAN domain. Contains 1 peptidase S1 domain.
Post-translational modifications	May be cleaved after Arg-483, to yield two chains held together by disulfide bonds, or two separate polypeptides.
Cellular localization	Secreted.

Images



12.5% SDS-PAGE stained with Coomassie
Blue showing ab116865 at approximately
36.85 kDa.

SDS-PAGE - MST1 protein (Human) (ab116865)

Please note: All products are "FOR RESEARCH USE ONLY AND ARE NOT INTENDED FOR DIAGNOSTIC OR THERAPEUTIC USE"

Our Abpromise to you: Quality guaranteed and expert technical support

- Replacement or refund for products not performing as stated on the datasheet
- Valid for 12 months from date of delivery
- Response to your inquiry within 24 hours

- We provide support in Chinese, English, French, German, Japanese and Spanish
- Extensive multi-media technical resources to help you
- We investigate all quality concerns to ensure our products perform to the highest standards

If the product does not perform as described on this datasheet, we will offer a refund or replacement. For full details of the Abpromise, please visit <https://www.abcam.com/abpromise> or contact our technical team.

Terms and conditions

- Guarantee only valid for products bought direct from Abcam or one of our authorized distributors