

Product datasheet

Recombinant Human Mutarotase protein ab98150

1 Image

Overview

Product name	Recombinant Human Mutarotase protein
Protein length	Full length protein

Description

Nature	Recombinant
Source	Escherichia coli

Amino Acid Sequence

Accession	Q96C23
Species	Human
Sequence	MGSSHHHHHSSGLVPRGSH MASVTRAVFGELPSGGGTVEKFQLQSDLLR VDIISWGCTITALEVKDRQGRASDVVLGFAELEGYLQKQPYFGAVIGRVA NRIAKGTFKVDGKEYHLAINKEPNSLHGGVVRGFDKVLWTPRVL SNGVQFS RISPDGEEGYPGELKVWVTYLDGGELMVNYRAQASQATPVNLTNHSYFN LAGQASPNINDHEVTIEADTYLPVDETLIPTGEVAPVQGTAFDLRKPVEL GKHLQDFHLNGFDHNFCLKGSKEKHFCARVHHAASGRVLEVYTTQPVGQF YTGNFLDGT LKGKNGAVYPKHSGFCLETQNWPD AVNQPRFPPVLLRPGEE YDHTTWFKFSVA
Molecular weight	40 kDa including tags
Amino acids	1 to 342
Tags	His tag N-Terminus

Specifications

Our [Abpromise guarantee](#) covers the use of **ab98150** in the following tested applications.

The application notes include recommended starting dilutions; optimal dilutions/concentrations should be determined by the end user.

Applications	Mass Spectrometry SDS-PAGE
Mass spectrometry	MALDI-TOF
Purity	> 95 % SDS-PAGE. ab98150 was purified by using conventional chromatography.

Form Liquid

Preparation and Storage

Stability and Storage

Shipped at 4°C. Store at +4°C short term (1-2 weeks). Upon delivery aliquot. Store at -20°C or -80°C. Avoid freeze / thaw cycle.

pH: 8.00

Constituents: 0.316% Tris HCl, 10% Glycerol

General Info

Function

Mutarotase converts alpha-aldose to the beta-anomer. It is active on D-glucose, L-arabinose, D-xylose, D-galactose, maltose and lactose.

Pathway

Carbohydrate metabolism; hexose metabolism.

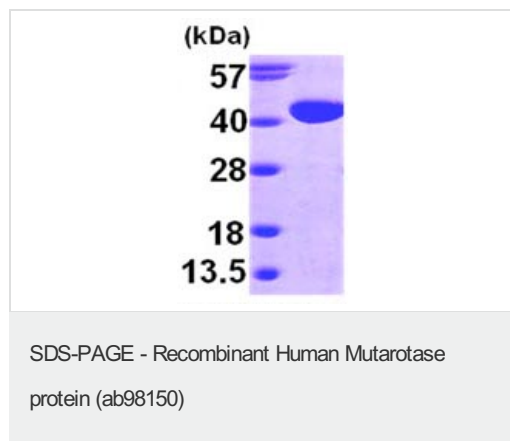
Sequence similarities

Belongs to the aldose epimerase family.

Cellular localization

Cytoplasm.

Images



15% SDS-PAGE analysis of 3µg ab98150

Please note: All products are "FOR RESEARCH USE ONLY AND ARE NOT INTENDED FOR DIAGNOSTIC OR THERAPEUTIC USE"

Our Abpromise to you: Quality guaranteed and expert technical support

- Replacement or refund for products not performing as stated on the datasheet
- Valid for 12 months from date of delivery
- Response to your inquiry within 24 hours
- We provide support in Chinese, English, French, German, Japanese and Spanish
- Extensive multi-media technical resources to help you
- We investigate all quality concerns to ensure our products perform to the highest standards

If the product does not perform as described on this datasheet, we will offer a refund or replacement. For full details of the Abpromise, please visit <https://www.abcam.com/abpromise> or contact our technical team.

Terms and conditions

- Guarantee only valid for products bought direct from Abcam or one of our authorized distributors