

Product datasheet

Recombinant Human NMDAR2B protein ab112298

1 Image

Overview

Product name	Recombinant Human NMDAR2B protein
Protein length	Protein fragment

Description

Nature	Recombinant
Source	Wheat germ

Amino Acid Sequence

Accession	Q13224
Species	Human
Sequence	HGGSSMIMADKDESSMFFQFGPSIEQQASVMLNIMEEYDWYIFSIVTTYF PGYQDFVNKIRSTIENSFVGWELEEVLLLDMSLDDGDSKIQNQLKQLQSP IILLYCTKEE
Molecular weight	38 kDa including tags
Amino acids	127 to 236
Tags	GST tag N-Terminus

Specifications

Our [Abpromise guarantee](#) covers the use of **ab112298** in the following tested applications.

The application notes include recommended starting dilutions; optimal dilutions/concentrations should be determined by the end user.

Biological activity	useful for Antibody Production and Protein Array
Applications	ELISA SDS-PAGE Western blot
Form	Liquid
Additional notes	useful for Antibody Production and Protein Array

Preparation and Storage

Stability and Storage

Shipped on dry ice. Upon delivery aliquot and store at -80°C. Avoid freeze / thaw cycles.

pH: 8.00

Constituents: 0.79% Tris HCl, 0.31% Glutathione

Note: Glutathione is reduced

General Info

Function

NMDA receptor subtype of glutamate-gated ion channels with high calcium permeability and voltage-dependent sensitivity to magnesium. Mediated by glycine.

Tissue specificity

Primarily found in the fronto-parieto-temporal cortex and hippocampus pyramidal cells, lower expression in the basal ganglia.

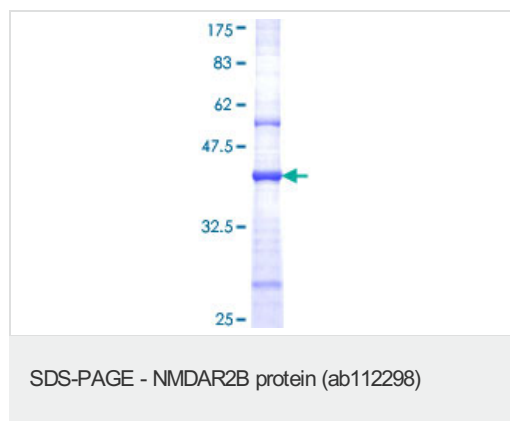
Sequence similarities

Belongs to the glutamate-gated ion channel (TC 1.A.10.1) family. NR2B/GRIN2B subfamily.

Cellular localization

Cell membrane. Cell junction > synapse > postsynaptic cell membrane.

Images



ab112298 analysed on a 12.5% SDS-PAGE stained with Coomassie Blue.

Please note: All products are "FOR RESEARCH USE ONLY AND ARE NOT INTENDED FOR DIAGNOSTIC OR THERAPEUTIC USE"

Our Abpromise to you: Quality guaranteed and expert technical support

- Replacement or refund for products not performing as stated on the datasheet
- Valid for 12 months from date of delivery
- Response to your inquiry within 24 hours
- We provide support in Chinese, English, French, German, Japanese and Spanish
- Extensive multi-media technical resources to help you
- We investigate all quality concerns to ensure our products perform to the highest standards

If the product does not perform as described on this datasheet, we will offer a refund or replacement. For full details of the Abpromise, please visit <https://www.abcam.com/abpromise> or contact our technical team.

Terms and conditions

- Guarantee only valid for products bought direct from Abcam or one of our authorized distributors