

Product datasheet

Recombinant Human OSMR protein ab160370

1 Image

Overview

Product name	Recombinant Human OSMR protein
Protein length	Full length protein

Description

Nature	Recombinant
Source	Wheat germ
Amino Acid Sequence	
Species	Human
Sequence	<p>MALFAVFQTTFFLTLLSLRTYQSEVLAERLPLTPVSLKV STNSTRQSLHL QWTVHNLPHYQELKMVFQIQISRIETSNVWVGNYSTTV KWNQVLHWSWE SELPLECATHFVRIKSLVDDAKFPEPNFWSNWSSWE EVSVQDSTGQDILF VFPKDKLVEEGTNVTICVSRNIQNNVSCYLEGKQIHGE QLDPHVTAFNL NSVPPFIRNKGTNIYCEASQGNVSEGMKGMFLVSKVLE EPKDFSCETEDF KTLHCTWDPGTDALGWSKQPSQSITLFEFSGEEKK LCTHKNWCNWQITQ DSQETYNFTLIAENYLKRSVNILFNLTHRGETRVVTAH RGH</p>
Amino acids	1 to 342
Tags	proprietary tag N-Terminus

Specifications

Our [Abpromise guarantee](#) covers the use of **ab160370** in the following tested applications.

The application notes include recommended starting dilutions; optimal dilutions/concentrations should be determined by the end user.

Applications	ELISA Western blot
Form	Liquid

Additional notes Protein concentration is above or equal to 0.05 mg/ml.

Preparation and Storage

Stability and Storage Shipped on dry ice. Upon delivery aliquot and store at -80°C. Avoid freeze / thaw cycles.
pH: 8.00
Constituents: 0.31% Glutathione, 0.79% Tris HCl

General Info

Function Associates with IL31RA to form the IL31 receptor. Binds IL31 to activate STAT3 and possibly STAT1 and STAT5. Capable of transducing OSM-specific signaling events.

Tissue specificity Expressed at relatively high levels in all neural cells as well as fibroblast, epithelial and a variety of tumor cell lines.

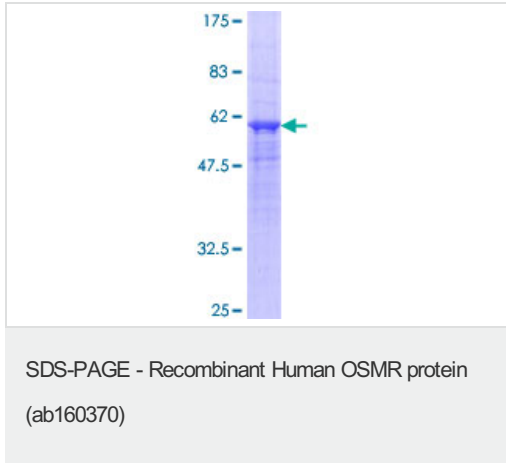
Involvement in disease Amyloidosis, primary localized cutaneous, 1 (PLCA1) [MIM:105250]: A primary amyloidosis characterized by localized cutaneous amyloid deposition. This condition usually presents with itching (especially on the lower legs) and visible changes of skin hyperpigmentation and thickening that may be exacerbated by chronic scratching and rubbing. Primary localized cutaneous amyloidosis is often divided into macular and lichen subtypes although many affected individuals often show both variants coexisting. Lichen amyloidosis characteristically presents as a pruritic eruption of grouped hyperkeratotic papules with a predilection for the shins, calves, ankles and dorsa of feet and thighs. Papules may coalesce to form hyperkeratotic plaques that can resemble lichen planus, lichen simplex or nodular prurigo. Macular amyloidosis is characterized by small pigmented macules that may merge to produce macular hyperpigmentation, sometimes with a reticulate or rippled pattern. In macular and lichen amyloidosis, amyloid is deposited in the papillary dermis in association with grouped colloid bodies, thought to represent degenerate basal keratinocytes. The amyloid deposits probably reflect a combination of degenerate keratin filaments, serum amyloid P component, and deposition of immunoglobulins. Note=The disease is caused by mutations affecting the gene represented in this entry.

Sequence similarities Belongs to the type I cytokine receptor family. Type 2 subfamily.
Contains 4 fibronectin type-III domains.

Domain The WSXWS motif appears to be necessary for proper protein folding and thereby efficient intracellular transport and cell-surface receptor binding.
The box 1 motif is required for JAK interaction and/or activation.

Cellular localization Membrane.

Images



ab160370 on a 12.5% SDS-PAGE stained with Coomassie Blue.

Please note: All products are "FOR RESEARCH USE ONLY AND ARE NOT INTENDED FOR DIAGNOSTIC OR THERAPEUTIC USE"

Our Abpromise to you: Quality guaranteed and expert technical support

- Replacement or refund for products not performing as stated on the datasheet
- Valid for 12 months from date of delivery
- Response to your inquiry within 24 hours
- We provide support in Chinese, English, French, German, Japanese and Spanish
- Extensive multi-media technical resources to help you
- We investigate all quality concerns to ensure our products perform to the highest standards

If the product does not perform as described on this datasheet, we will offer a refund or replacement. For full details of the Abpromise, please visit <https://www.abcam.com/abpromise> or contact our technical team.

Terms and conditions

- Guarantee only valid for products bought direct from Abcam or one of our authorized distributors