

Product datasheet

Recombinant Human PCDH11Y protein ab164385

1 Image

Overview

Product name	Recombinant Human PCDH11Y protein
Protein length	Protein fragment

Description

Nature	Recombinant
Source	Wheat germ
Amino Acid Sequence	
Species	Human
Sequence	EKNYTIREEIPENVLIGNLLKDLNLSLIPNKSLTTTMQFKL VYKTGDVPL IRIEEDTGEIFTTGARIDREKLCAGIPRDEHCFYEVEVAIL PDEIFRLVK IRFLIEDIN
Amino acids	57 to 165
Tags	proprietary tag N-Terminus

Specifications

Our [Abpromise guarantee](#) covers the use of **ab164385** in the following tested applications. The application notes include recommended starting dilutions; optimal dilutions/concentrations should be determined by the end user.

Applications	ELISA Western blot
Form	Liquid
Additional notes	Protein concentration is above or equal to 0.05 mg/ml.

Preparation and Storage

Stability and Storage	Shipped on dry ice. Upon delivery aliquot and store at -80°C. Avoid freeze / thaw cycles. pH: 8.00 Constituents: 0.31% Glutathione, 0.79% Tris HCl
------------------------------	--

General Info

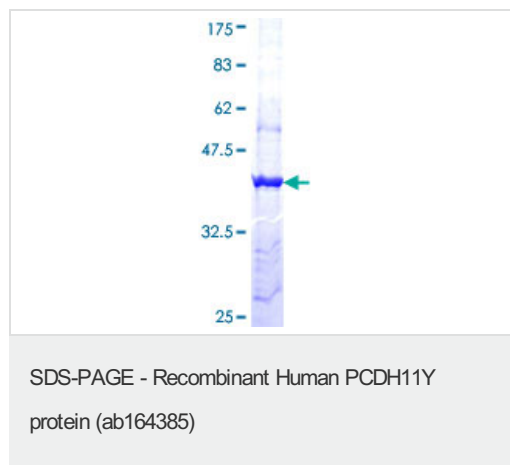
Relevance

PCDH11Y (Protocadherin 11 Y-linked) is a member of the protocadherin family. Protocadherins constitute the largest subgroup within the cadherin family of calcium-dependent cell-cell adhesion molecules. Their specific functions are unknown but they may be involved in the establishment and function of specific neuronal connections in the brain. The PCDH11Y gene is located in a major X/Y block of homology and its most closely related cadherin superfamily member is located in this homologous region on the X chromosome (PCDH11X).

Cellular localization

Cell membrane; Single-pass type I membrane protein.

Images



ab164385 on a 12.5% SDS-PAGE stained with Coomassie Blue.

Please note: All products are "FOR RESEARCH USE ONLY AND ARE NOT INTENDED FOR DIAGNOSTIC OR THERAPEUTIC USE"

Our Abpromise to you: Quality guaranteed and expert technical support

- Replacement or refund for products not performing as stated on the datasheet
- Valid for 12 months from date of delivery
- Response to your inquiry within 24 hours
- We provide support in Chinese, English, French, German, Japanese and Spanish
- Extensive multi-media technical resources to help you
- We investigate all quality concerns to ensure our products perform to the highest standards

If the product does not perform as described on this datasheet, we will offer a refund or replacement. For full details of the Abpromise, please visit <https://www.abcam.com/abpromise> or contact our technical team.

Terms and conditions

- Guarantee only valid for products bought direct from Abcam or one of our authorized distributors