

Product datasheet

Recombinant Human PLCL2 protein ab91794

1 Image

Overview

<b>Product name</b>	Recombinant Human PLCL2 protein
<b>Protein length</b>	Protein fragment

Description

<b>Nature</b>	Recombinant
<b>Source</b>	Escherichia coli

Amino Acid Sequence

<b>Species</b>	Human
<b>Sequence</b>	<p>MRIDSSNMNPQDFWKCGCQVAMNFQTPGLMMDLNIGWFRQNGNCGYVLR            PA            IMREEVSFFSANTKDSVPGVSPQLLHIKISGQNFPPKPKGSGAKGD            VVDPYV            YVEIHGIPADCAEQRTKTVHQNGDAPIFDESFEFQINLPELA            MVRFVVLDDD            YIGDEFIQYTIPFECLQTGYRHVPLQSLTGEVLAHAS            LFVHVAITNRRGGG            KPHKRGLSVRKGKKSREYASLRTLWIKTVDEVFK            NAQPPIRDATDLRENMQN            AVVSFKELCGLSSVANLMQCMLAVSPRFLG            PDNTPLVVLNLSEQYPTMELQG            MPEVLKKIVTTYDMMIQSLKALIEN            ADAVYEKMHQCQAAMEFHEHLHSIG            TKEGLKERKLQKAVESFTWNIT            ILKGQADLLKYAKNETLENLKQIHFAAVSC            GLNKPGTENADVQKPRRS LEVIPEKANDETGE</p>
<b>Amino acids</b>	554 to 1001

Specifications

Our [Abpromise guarantee](#) covers the use of **ab91794** in the following tested applications.

The application notes include recommended starting dilutions; optimal dilutions/concentrations should be determined by the end user.

<b>Applications</b>	SDS-PAGE
---------------------	----------

Mass Spectrometry

**Form**

Lyophilised

**Additional notes**

Protein Identity confirmed by Mass Spectrometry (MS/MS) (acquired on initial reference batch).

**Preparation and Storage**

---

**Stability and Storage**

Shipped at 4°C. Upon delivery aliquot and store at -80°C. Avoid freeze / thaw cycles.

Preservative: None

Constituents: 0.5% Trehalose, 6M Urea, 100mM Sodium phosphate, 10mM Sodium chloride, pH 4.5

**Reconstitution**

Reconstitute with 106 µl aqua dest.

**General Info**

---

**Function**

May play a role in the regulation of Ins(1,4,5)P3 around the endoplasmic reticulum.

**Sequence similarities**

Contains 1 C2 domain.

Contains 1 PH domain.

Contains 1 PI-PLC X-box domain.

Contains 1 PI-PLC Y-box domain.

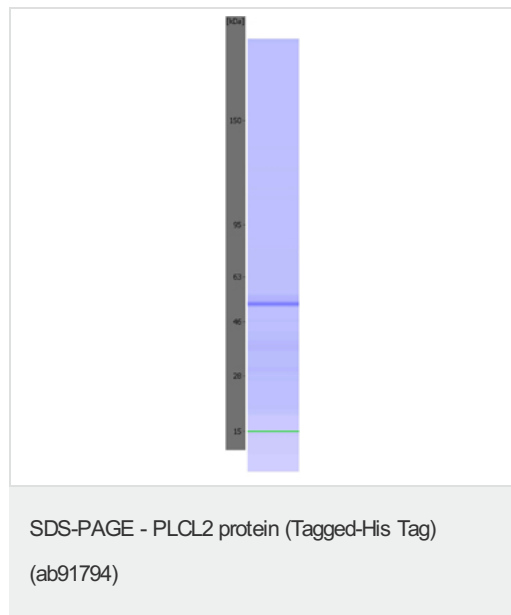
**Cellular localization**

Cytoplasm. Predominantly localized to perinuclear areas in both myoblast and myotube C2C12 cells.

---

**Images**

---



The image shows an electrophoretic assay performed using an Agilent 5100 ALP. In some images coloured control bands can be seen at 15 kDa (green) and/or 240 kDa (purple). The protein-specific band is blue.

**Please note:** All products are "FOR RESEARCH USE ONLY AND ARE NOT INTENDED FOR DIAGNOSTIC OR THERAPEUTIC USE"

**Our Abpromise to you: Quality guaranteed and expert technical support**

---

- Replacement or refund for products not performing as stated on the datasheet
- Valid for 12 months from date of delivery
- Response to your inquiry within 24 hours
  
- We provide support in Chinese, English, French, German, Japanese and Spanish
- Extensive multi-media technical resources to help you
- We investigate all quality concerns to ensure our products perform to the highest standards

If the product does not perform as described on this datasheet, we will offer a refund or replacement. For full details of the Abpromise, please visit <https://www.abcam.com/abpromise> or contact our technical team.

### **Terms and conditions**

---

- Guarantee only valid for products bought direct from Abcam or one of our authorized distributors