

Product datasheet

Recombinant Human Phosphoserine phosphatase protein ab48755

1 Image

Overview

Product name	Recombinant Human Phosphoserine phosphatase protein
Protein length	Full length protein

Description

Nature	Recombinant
Source	Escherichia coli

Amino Acid Sequence

Species	Human
Sequence	MVSHSELRKL FYSADAVCFD VDSTVIREEG IDELAKICGV EDAVSEMTRR AMGGAVPFKA ALTERLALIQ PSREQVQRLLI AEQPPHLTPG IRELVSRLQE RNVQVFLISG GFRSIVHVA SKLNIPATNV FANRLKFYFN GEYAGFDETQ PTAESGGK GK VIKLLKEKFH FKKIIMIGDG ATDMEACPPA DAFIGFGGNV IRQQVKDNAK WYITDFVELL GELEE
Amino acids	1 to 225

Specifications

Our [Abpromise guarantee](#) covers the use of **ab48755** in the following tested applications.

The application notes include recommended starting dilutions; optimal dilutions/concentrations should be determined by the end user.

Applications	SDS-PAGE
Purity	> 95 % SDS-PAGE. Recombinant human Phosphoserine phosphatase was overexpressed in E. coli and purified by conventional chromatography.
Form	Liquid

Preparation and Storage

Stability and Storage

Shipped at 4°C. Upon delivery aliquot and store at -20°C. Avoid freeze / thaw cycles.

Preservative: None

Constituents: 20mM HEPES, 100mM Potassium chloride, 1mM DTT, pH 7.5

General Info

Function

Catalyzes the last step in the biosynthesis of serine from carbohydrates. The reaction mechanism proceeds via the formation of a phosphoryl-enzyme intermediates.

Pathway

Amino-acid biosynthesis; L-serine biosynthesis; L-serine from 3-phospho-D-glycerate: step 3/3.

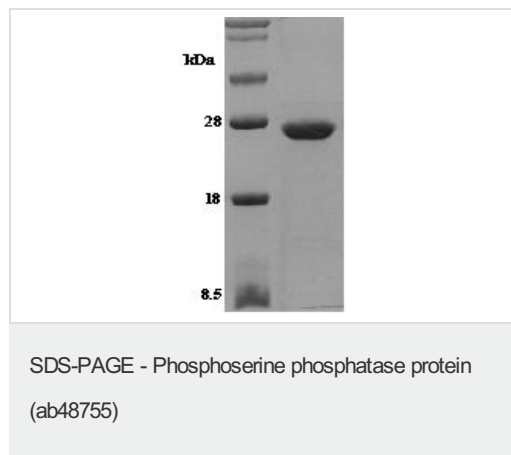
Involvement in disease

Defects in PSPH are the cause of phosphoserine phosphatase deficiency (PSPHD) [MIM:614023]. A disorder that results in pre- and postnatal growth retardation, moderate psychomotor retardation and facial features suggestive of Williams syndrome.

Sequence similarities

Belongs to the SerB family.

Images



14% SDS-PAGE gel loaded with ab48755 recombinant human Phosphoserine phosphatase, M.Wt. 25kDa

Please note: All products are "FOR RESEARCH USE ONLY AND ARE NOT INTENDED FOR DIAGNOSTIC OR THERAPEUTIC USE"

Our Abpromise to you: Quality guaranteed and expert technical support

- Replacement or refund for products not performing as stated on the datasheet
- Valid for 12 months from date of delivery
- Response to your inquiry within 24 hours
- We provide support in Chinese, English, French, German, Japanese and Spanish
- Extensive multi-media technical resources to help you
- We investigate all quality concerns to ensure our products perform to the highest standards

If the product does not perform as described on this datasheet, we will offer a refund or replacement. For full details of the Abpromise, please visit <https://www.abcam.com/abpromise> or contact our technical team.

Terms and conditions

- Guarantee only valid for products bought direct from Abcam or one of our authorized distributors