

## Product datasheet

# Recombinant Human Protein phosphatase 1 inhibitor subunit 2 ab114835

[1 Image](#)

### Overview

---

<b>Product name</b>	Recombinant Human Protein phosphatase 1 inhibitor subunit 2
<b>Protein length</b>	Full length protein

### Description

---

<b>Nature</b>	Recombinant
<b>Source</b>	Wheat germ
<b>Amino Acid Sequence</b>	
<b>Accession</b>	<a href="#">P41236</a>
<b>Species</b>	Human
<b>Sequence</b>	MAASTASHRPIKGILKNKTSTSSMVASAEQPRGNVDE ELSKKSQKWDEM NILATYHPADKDYGLMKIDEPSTPYHSMMGDDEDACS DTEATEAMAPDIL ARKLAAAEGLEPKYRIQEQESSGEEDSDLSPEEREKK RQFEMKRKLHYNE GLNIKLARQLISKDLHDDDEDEEMLETADGESMNTEE SNQGSTPSDQQQN KLRSS
<b>Molecular weight</b>	49 kDa including tags
<b>Amino acids</b>	1 to 205

### Specifications

---

Our [Abpromise guarantee](#) covers the use of **ab114835** in the following tested applications.

The application notes include recommended starting dilutions; optimal dilutions/concentrations should be determined by the end user.

<b>Applications</b>	ELISA SDS-PAGE Western blot
<b>Form</b>	Liquid
<b>Additional notes</b>	Protein concentration is above or equal to 0.05 mg/ml. Best used within three months from the date of receipt.

## Preparation and Storage

### Stability and Storage

Shipped on dry ice. Upon delivery aliquot and store at -80°C. Avoid freeze / thaw cycles.

pH: 8.00

Constituents: 0.3% Glutathione, 0.79% Tris HCl

## General Info

### Function

Inhibitor of protein-phosphatase 1.

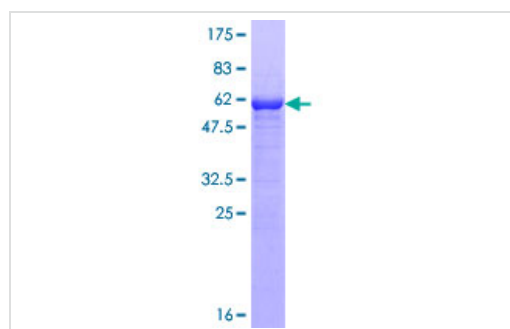
### Sequence similarities

Belongs to the protein phosphatase inhibitor 2 family.

### Post-translational modifications

Phosphorylation on Thr-73 by GSK3 activates PP1 by dissociating the PP1-PPP1R2 complex (By similarity). Phosphorylation on Ser-44 by ATM activates PP1 by dissociating the PP1-PPP1R2 complex.

## Images



SDS-PAGE - Recombinant Human Protein  
phosphatase 1 inhibitor subunit 2 (ab114835)

ab114835 analysed on a 12.5% SDS-PAGE gel stained with Coomassie Blue.

**Please note:** All products are "FOR RESEARCH USE ONLY AND ARE NOT INTENDED FOR DIAGNOSTIC OR THERAPEUTIC USE"

## Our Abpromise to you: Quality guaranteed and expert technical support

- Replacement or refund for products not performing as stated on the datasheet
- Valid for 12 months from date of delivery
- Response to your inquiry within 24 hours
- We provide support in Chinese, English, French, German, Japanese and Spanish
- Extensive multi-media technical resources to help you
- We investigate all quality concerns to ensure our products perform to the highest standards

If the product does not perform as described on this datasheet, we will offer a refund or replacement. For full details of the Abpromise, please visit <https://www.abcam.com/abpromise> or contact our technical team.

## Terms and conditions

---

- Guarantee only valid for products bought direct from Abcam or one of our authorized distributors