

## Product datasheet

# Recombinant Human RNF128 protein ab164040

1 Image

### Overview

---

<b>Product name</b>	Recombinant Human RNF128 protein
<b>Protein length</b>	Full length protein

### Description

---

<b>Nature</b>	Recombinant
<b>Source</b>	Wheat germ

### Amino Acid Sequence

<b>Species</b>	Human
<b>Sequence</b>	<p>MGPPPAGVSCRGGCGFSRLLAWCFLLALSPQAPGSRGAEAVWTA YLNVS            WRVPHTGVNRTVWELSEE GVGQDSPLEPVAGVLVPPDGP GALNACNPHT            NFTVPTVWGSTVQVSWLALIQRGGGCTFADKIH LAYERGASGAVIFNFPG            TRNEVIPM SHPGAVDIVAIMIGNLKGTKILQSIQRGIQV TMVIEVGKKHG            PWNHYSIFFVSVSFFIITAATVGYFIFY SARRLRNARAQSRKQRQLKAD            AKKAIGRLQLRTLKQGDKEIGPDGDSCAVCI ELYKPNDLVRLTCNHIFH            KTCVDPW LLEHRTCPMCKCDILKALGIEVDVEDG SVSLQVPVSNEISNSA            SSHEEDNRSETASSGYASVQGTDEPPLEEHVQSTNESLQLVNHEANSVAV            DVIPHVDNPTFEEDETPNQETAVREIKS</p>
<b>Amino acids</b>	1 to 428
<b>Tags</b>	proprietary tag N-Terminus

### Specifications

---

Our [Abpromise guarantee](#) covers the use of **ab164040** in the following tested applications.

The application notes include recommended starting dilutions; optimal dilutions/concentrations should be determined by the end user.

<b>Applications</b>	Western blot ELISA
<b>Form</b>	Liquid
<b>Additional notes</b>	Protein concentration is above or equal to 0.05 mg/ml.

### Preparation and Storage

---

## Stability and Storage

Shipped on dry ice. Upon delivery aliquot and store at -80°C. Avoid freeze / thaw cycles.

pH: 8.00

Constituents: 0.31% Glutathione, 0.79% Tris HCl

## General Info

### Function

E3 ubiquitin-protein ligase that catalyzes polyubiquitin chains. Functions as an inhibitor of cytokine gene transcription. Inhibits IL2 and IL4 transcription and this activity is likely to be mediated by E3 ligase activity. Plays an important role in the induction of the anergic phenotype. Functions in the patterning of the dorsal ectoderm; sensitizes ectoderm to respond to neural-inducing signals.

### Pathway

Protein modification; protein ubiquitination.

### Sequence similarities

Contains 1 PA (protease associated) domain.

Contains 1 RING-type zinc finger.

### Domain

Binding to E2 ubiquitin-conjugating enzyme requires an intact RING finger domain.

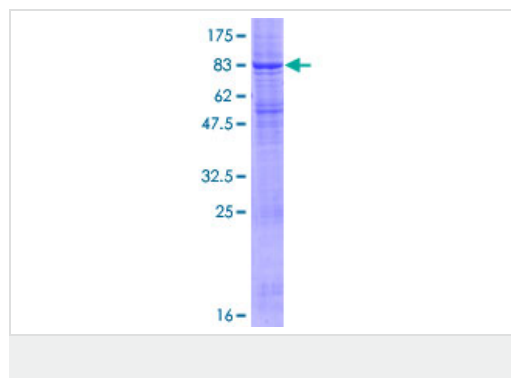
### Post-translational modifications

Auto-ubiquitinated. Controls the development of T cell clonal anergy by ubiquitination.

### Cellular localization

Endomembrane system. Cytoplasm > perinuclear region. Localized in an asymmetric perinuclear punctate manner. Localizes to the internal pool of the transferrin recycling endosomal pathway. Partially colocalized with the endoplasmic reticulum resident HSPA5, with Golgi resident STX5, and with the late endosomal GTPase RAB7.

## Images



ab164040 on a 12.5% SDS-PAGE stained with Coomassie Blue.

**Please note:** All products are "FOR RESEARCH USE ONLY AND ARE NOT INTENDED FOR DIAGNOSTIC OR THERAPEUTIC USE"

## Our Abpromise to you: Quality guaranteed and expert technical support

- Replacement or refund for products not performing as stated on the datasheet
- Valid for 12 months from date of delivery
- Response to your inquiry within 24 hours
- We provide support in Chinese, English, French, German, Japanese and Spanish
- Extensive multi-media technical resources to help you

- We investigate all quality concerns to ensure our products perform to the highest standards

If the product does not perform as described on this datasheet, we will offer a refund or replacement. For full details of the Abpromise, please visit <https://www.abcam.com/abpromise> or contact our technical team.

### **Terms and conditions**

---

- Guarantee only valid for products bought direct from Abcam or one of our authorized distributors