

Product datasheet

Recombinant Human RRM1 protein ab114382

[1 Image](#)

Overview

Product name	Recombinant Human RRM1 protein
Protein length	Protein fragment

Description

Nature	Recombinant
Source	Wheat germ

Amino Acid Sequence

Accession	P23921
Species	Human
Sequence	DLTERGLWHEEMKNQIACNGSIQSIPEIPDDLKQLYKTVWEISQKTVLK MAAERGAFIDQSQSLNIHIAEPNYGKLTSMHFYGWKQGLKTGMYLRT AANPIQFTLN
Molecular weight	38 kDa including tags
Amino acids	644 to 753

Specifications

Our [Abpromise guarantee](#) covers the use of **ab114382** in the following tested applications.

The application notes include recommended starting dilutions; optimal dilutions/concentrations should be determined by the end user.

Applications	ELISA Western blot SDS-PAGE
Form	Liquid
Additional notes	Protein concentration is above or equal to 0.05 mg/ml. ab114382 is best used within three months from the date of receipt.

Preparation and Storage

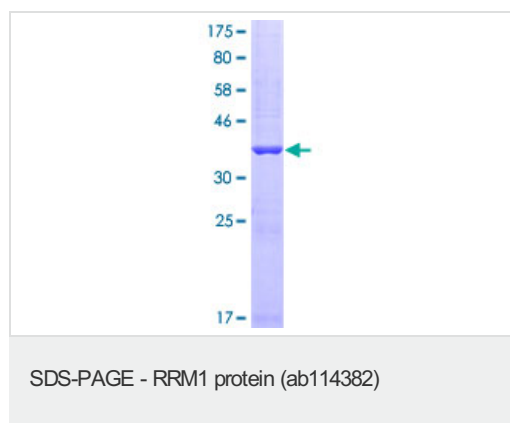
Stability and Storage	Shipped on dry ice. Upon delivery aliquot and store at -80°C. Avoid freeze / thaw cycles.
------------------------------	---

pH: 8.00
Constituents: 0.79% Tris HCl, 0.3% Glutathione

General Info

Function	Provides the precursors necessary for DNA synthesis. Catalyzes the biosynthesis of deoxyribonucleotides from the corresponding ribonucleotides.
Pathway	Genetic information processing; DNA replication.
Sequence similarities	Belongs to the ribonucleoside diphosphate reductase large chain family. Contains 1 ATP-cone domain.
Cellular localization	Cytoplasm.

Images



ab114382 analysed on a 12.5% SDS-PAGE
Stained with Coomassie Blue.

Please note: All products are "FOR RESEARCH USE ONLY AND ARE NOT INTENDED FOR DIAGNOSTIC OR THERAPEUTIC USE"

Our Abpromise to you: Quality guaranteed and expert technical support

- Replacement or refund for products not performing as stated on the datasheet
- Valid for 12 months from date of delivery
- Response to your inquiry within 24 hours
- We provide support in Chinese, English, French, German, Japanese and Spanish
- Extensive multi-media technical resources to help you
- We investigate all quality concerns to ensure our products perform to the highest standards

If the product does not perform as described on this datasheet, we will offer a refund or replacement. For full details of the Abpromise, please visit <https://www.abcam.com/abpromise> or contact our technical team.

Terms and conditions

- Guarantee only valid for products bought direct from Abcam or one of our authorized distributors