

## Product datasheet

# Recombinant Human SAP102 protein ab152337

1 Image

### Overview

<b>Product name</b>	Recombinant Human SAP102 protein
<b>Protein length</b>	Protein fragment

### Description

<b>Nature</b>	Recombinant
<b>Source</b>	Wheat germ
<b>Amino Acid Sequence</b>	
<b>Accession</b>	<a href="#">Q92796</a>
<b>Species</b>	Human
<b>Sequence</b>	VNNTNLQDVRHEEAVASLKNTSDMVYLKVAKPGSLHL NDMYAPPDYASTF TALADNHISHNSSLGYLGAVESKVSYPAPPQVPPTSYS PIPRHMLAEEDF
<b>Molecular weight</b>	37 kDa including tags
<b>Amino acids</b>	281 to 380

### Specifications

Our [Abpromise guarantee](#) covers the use of **ab152337** in the following tested applications.

The application notes include recommended starting dilutions; optimal dilutions/concentrations should be determined by the end user.

<b>Applications</b>	ELISA Western blot SDS-PAGE
<b>Form</b>	Liquid
<b>Additional notes</b>	Protein concentration is above or equal to 0.05 µg/µl.

### Preparation and Storage

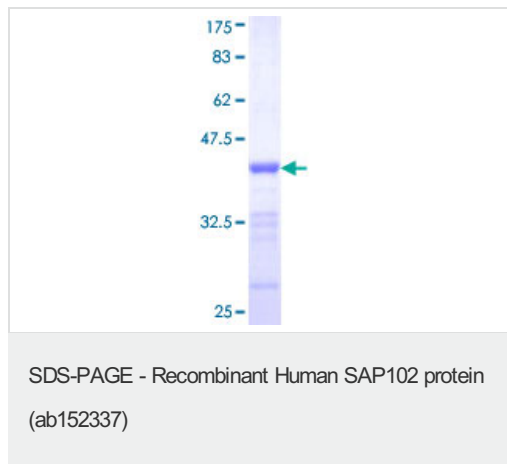
<b>Stability and Storage</b>	Shipped on dry ice. Upon delivery aliquot and store at -80°C. Avoid freeze / thaw cycles. pH: 8.00
------------------------------	---

Constituents: 0.31% Glutathione, 0.79% Tris HCl

## General Info

<b>Function</b>	Required for learning most likely through its role in synaptic plasticity following NMDA receptor signaling.
<b>Involvement in disease</b>	Defects in DLG3 are the cause of mental retardation X-linked type 90 (MRX90) [MIM:300189]. Mental retardation is characterized by significantly sub-average general intellectual functioning associated with impairments in adaptive behavior and manifested during the developmental period. Non-syndromic mental retardation patients do not manifest other clinical signs.
<b>Sequence similarities</b>	Belongs to the MAGUK family. Contains 1 guanylate kinase-like domain. Contains 3 PDZ (DHR) domains. Contains 1 SH3 domain.

## Images



12.5% SDS-PAGE analysis of ab152337 stained with Coomassie Blue.

**Please note:** All products are "FOR RESEARCH USE ONLY AND ARE NOT INTENDED FOR DIAGNOSTIC OR THERAPEUTIC USE"

## Our Abpromise to you: Quality guaranteed and expert technical support

- Replacement or refund for products not performing as stated on the datasheet
- Valid for 12 months from date of delivery
- Response to your inquiry within 24 hours
- We provide support in Chinese, English, French, German, Japanese and Spanish
- Extensive multi-media technical resources to help you
- We investigate all quality concerns to ensure our products perform to the highest standards

If the product does not perform as described on this datasheet, we will offer a refund or replacement. For full details of the Abpromise, please visit <https://www.abcam.com/abpromise> or contact our technical team.

## Terms and conditions

- Guarantee only valid for products bought direct from Abcam or one of our authorized distributors