

## Product datasheet

# Recombinant Human SEC14 like protein 2 ab161677

1 Image

### Overview

---

<b>Product name</b>	Recombinant Human SEC14 like protein 2
<b>Protein length</b>	Full length protein

### Description

---

<b>Nature</b>	Recombinant
<b>Source</b>	Wheat germ

### Amino Acid Sequence

<b>Species</b>	Human
<b>Sequence</b>	MSGRVGDLSPRQKEALAKFRENVQDVLPALPNPDDYFLLRWLRARSFDLQ KSEAMLRKHVEFRKQKQKIDIDNIISWQPPEVIQQYLSGGMCGYDLGCPVWY DIIGPLDAKGLLFSASKQDLLRTKMRECELLLQECAHQTTKLGRKVEITIT IYDCEGLGLKHLWKPAVEAYGEFLCMFEENYPETLKRFLVVKAPKLFVP AYNLKPFALSEDTRKKIMVLGANWKEVLLKHISPDQVPVEYGGTMTDPDG NPKCKSKINYGGDIPRKYVYRDQVKQQYEHSVQISRGSSHQVEYEILFPG CVLRWQFMSDGADVGFIFLKTGMGERQRAGEMTEVLPNQRYNSHLVPED GTLTCDPVGICKYLCLGNALKPHVQLSACEVPLPPWIFGSEC
<b>Amino acids</b>	1 to 392
<b>Tags</b>	proprietary tag N-Terminus

### Specifications

---

Our [Abpromise guarantee](#) covers the use of **ab161677** in the following tested applications.

The application notes include recommended starting dilutions; optimal dilutions/concentrations should be determined by the end user.

<b>Applications</b>	Western blot ELISA
<b>Form</b>	Liquid
<b>Additional notes</b>	Protein concentration is above or equal to 0.05 mg/ml.

### Preparation and Storage

---

## Stability and Storage

Shipped on dry ice. Upon delivery aliquot and store at -80°C. Avoid freeze / thaw cycles.

pH: 8.00

Constituents: 0.31% Glutathione, 0.79% Tris HCl

## General Info

---

### Function

Carrier protein. Binds to some hydrophobic molecules and promotes their transfer between the different cellular sites. Binds with high affinity to alpha-tocopherol. Also binds with a weaker affinity to other tocopherols and to tocotrienols. May have a transcriptional activatory activity via its association with alpha-tocopherol. Probably recognizes and binds some squalene structure, suggesting that it may regulate cholesterol biosynthesis by increasing the transfer of squalene to a metabolic active pool in the cell.

### Tissue specificity

Widely expressed. Strong expression in liver, brain and prostate.

### Sequence similarities

Contains 1 CRAL-TRIO domain.

Contains 1 GOLD domain.

### Developmental stage

Low expression in fetal tissues.

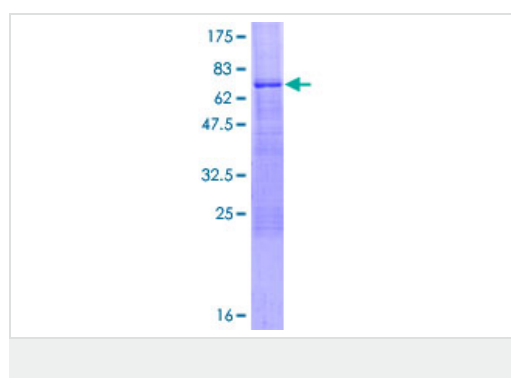
### Cellular localization

Cytoplasm. Nucleus. Cytoplasmic in absence of alpha-tocopherol, and nuclear in presence of alpha-tocopherol.

---

## Images

---



ab161677 on a 12.5% SDS-PAGE stained with Coomassie Blue.

**Please note:** All products are "FOR RESEARCH USE ONLY AND ARE NOT INTENDED FOR DIAGNOSTIC OR THERAPEUTIC USE"

## Our Abpromise to you: Quality guaranteed and expert technical support

---

- Replacement or refund for products not performing as stated on the datasheet
- Valid for 12 months from date of delivery
- Response to your inquiry within 24 hours
- We provide support in Chinese, English, French, German, Japanese and Spanish
- Extensive multi-media technical resources to help you
- We investigate all quality concerns to ensure our products perform to the highest standards

If the product does not perform as described on this datasheet, we will offer a refund or replacement. For full details of the Abpromise, please visit <https://www.abcam.com/abpromise> or contact our technical team.

## Terms and conditions

---

- Guarantee only valid for products bought direct from Abcam or one of our authorized distributors