

Product datasheet

Recombinant Human SERPINB1 protein **ab114775**

1 Image

Overview

Product name Recombinant Human SERPINB1 protein
Protein length Protein fragment

Description

Nature Recombinant
Source Wheat germ

Amino Acid Sequence

Accession [P30740](#)
Species Human
Sequence KKKFAYGYIEDLKCRVLELPYQGEELSMVILLPDDIEDESTGLKKIEEQL
 TLEKLHEWTKPENLDFIEVNVSLPRFKLEESYTLNSDLARLGVQDLFNSS
Molecular weight 37 kDa including tags
Amino acids 201 to 300

Specifications

Our [Abpromise guarantee](#) covers the use of **ab114775** in the following tested applications.

The application notes include recommended starting dilutions; optimal dilutions/concentrations should be determined by the end user.

Applications ELISA
 SDS-PAGE
 Western blot

Form Liquid

Additional notes Protein concentration is above or equal to 0.05 mg/ml.
 Best used within three months from the date of receipt.

Preparation and Storage

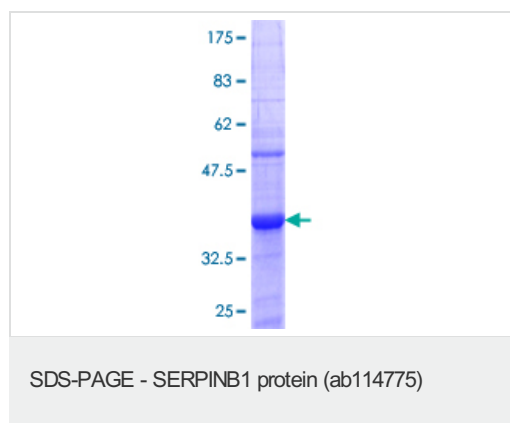
Stability and Storage Shipped on dry ice. Upon delivery aliquot and store at -80°C. Avoid freeze / thaw cycles.
 pH: 8.00

Constituents: 0.3% Glutathione, 0.79% Tris HCl

General Info

Function	Regulates the activity of the neutrophil proteases elastase, cathepsin G, proteinase-3, chymase, chymotrypsin, and kallikrein-3.
Sequence similarities	Belongs to the serpin family. Ov-serpin subfamily.
Domain	Reactive bond 1 is specific for reaction with chymotrypsin-like protease such as cathepsin G, chymotrypsin or chymase, while reactive bond 2 is specific for reaction with elastase-like protease such as neutrophyl elastase, proteinase-3, pancreatic elastase or PSA.
Cellular localization	Cytoplasm.

Images



ab114775 analysed on a 12.5% SDS-PAGE gel stained with Coomassie Blue.

Please note: All products are "FOR RESEARCH USE ONLY AND ARE NOT INTENDED FOR DIAGNOSTIC OR THERAPEUTIC USE"

Our Abpromise to you: Quality guaranteed and expert technical support

- Replacement or refund for products not performing as stated on the datasheet
- Valid for 12 months from date of delivery
- Response to your inquiry within 24 hours
- We provide support in Chinese, English, French, German, Japanese and Spanish
- Extensive multi-media technical resources to help you
- We investigate all quality concerns to ensure our products perform to the highest standards

If the product does not perform as described on this datasheet, we will offer a refund or replacement. For full details of the Abpromise, please visit <https://www.abcam.com/abpromise> or contact our technical team.

Terms and conditions

- Guarantee only valid for products bought direct from Abcam or one of our authorized distributors