

Product datasheet

Recombinant Human SLP76 protein ab114697

1 Image

Overview

<b>Product name</b>	Recombinant Human SLP76 protein
<b>Protein length</b>	Full length protein

Description

<b>Nature</b>	Recombinant
<b>Source</b>	Wheat germ
<b>Amino Acid Sequence</b>	
<b>Accession</b>	<a href="#">Q13094</a>
<b>Species</b>	Human

<b>Sequence</b>	<p>MALRNVPFRSEVLGWDPDSLADYFKKLNKYDCEKAV          KKYHIDGARFLNLT          ENDIQKFPKLRVPILSKLSQEINKNEERRSIFTRKQVP          RFPEETESHEE          DNGGWSSFEEDDYESPNDQDGEDDGDYESPNEEE          EAPVEDDADYEPPPS          NDEEALQNSILPAKPFPSNSNSMYDRPPSGKTPQQPP          VPPQRPMAALPPP          PAGRNHSPLPPPQTNHEEPSRSRNHKTAKLPAPSIDR          STKPPLDRSLAPF          DREPFTLGKKPPFSDKPSIPAGRSLGEHLPKIQKPPLP          PTERHERSSPL          PGKKPPVPKHGWGPDRRENDEDDVHQRPLPQPALL          PMSSNTFPSRSTKPS          PMNPLSSHMPGAFSESNSSFPQSASLPPYFSQGPS          NRPPIRAEGRFPL          PLPNKPRPPSPAEEENSLNEEWVYSYTRPEAEAALR          KINQDGTFLVRDS          SKKTTTNPVLMVLYKDKVYNIQIRYQKESQVYLLGTGL          RGKEDFLSVSD          IIDYFRKMPLLLIDGKNRGSRYQCTLTHAAGYP</p>
-----------------	---

<b>Molecular weight</b>	85 kDa including tags
<b>Amino acids</b>	1 to 533

## Specifications

---

Our [Abpromise guarantee](#) covers the use of **ab114697** in the following tested applications.

The application notes include recommended starting dilutions; optimal dilutions/concentrations should be determined by the end user.

<b>Applications</b>	ELISA SDS-PAGE Western blot
<b>Form</b>	Liquid
<b>Additional notes</b>	Protein concentration is above or equal to 0.05 mg/ml.

## Preparation and Storage

---

<b>Stability and Storage</b>	Shipped on dry ice. Upon delivery aliquot and store at -80°C. Avoid freeze / thaw cycles. pH: 8.00 Constituents: 0.3% Glutathione, 0.79% Tris HCl
------------------------------	---

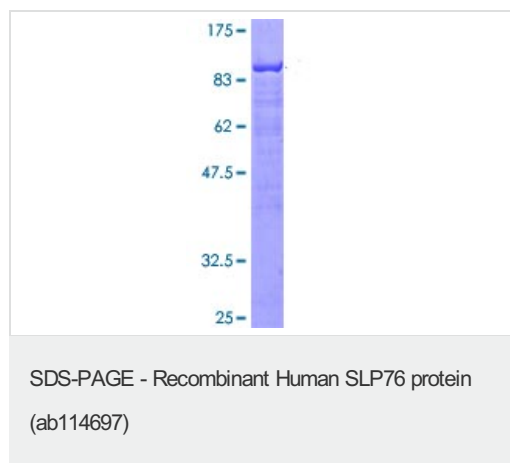
## General Info

---

<b>Function</b>	Involved in T-cell antigen receptor mediated signaling.
<b>Tissue specificity</b>	Highly expressed in spleen, thymus and peripheral blood leukocytes. Highly expressed also in T-cell and monocytic cell lines, expressed at lower level in B-cell lines. Not detected in fibroblast or neuroblastoma cell lines.
<b>Sequence similarities</b>	Contains 1 SAM (sterile alpha motif) domain. Contains 1 SH2 domain.
<b>Domain</b>	The SH2 domain mediates interaction with SHB.
<b>Post-translational modifications</b>	Phosphorylated after T-cell receptor activation by ZAP-70.
<b>Cellular localization</b>	Cytoplasm.

## Images

---



12.5% SDS-PAGE showing ab114697 at approximately 84.74 kDa stained with Coomassie Blue.

**Please note:** All products are "FOR RESEARCH USE ONLY AND ARE NOT INTENDED FOR DIAGNOSTIC OR THERAPEUTIC USE"

## **Our Abpromise to you: Quality guaranteed and expert technical support**

---

- Replacement or refund for products not performing as stated on the datasheet
- Valid for 12 months from date of delivery
- Response to your inquiry within 24 hours
  
- We provide support in Chinese, English, French, German, Japanese and Spanish
- Extensive multi-media technical resources to help you
- We investigate all quality concerns to ensure our products perform to the highest standards

If the product does not perform as described on this datasheet, we will offer a refund or replacement. For full details of the Abpromise, please visit <https://www.abcam.com/abpromise> or contact our technical team.

## **Terms and conditions**

---

- Guarantee only valid for products bought direct from Abcam or one of our authorized distributors