

Product datasheet

Recombinant Human SLX1 protein ab163955

1 Image

Overview

Product name	Recombinant Human SLX1 protein
Protein length	Full length protein

Description

Nature	Recombinant
Source	Wheat germ

Amino Acid Sequence

Species	Human
Sequence	MGPAGVAARPGRFFGVYLLYCLNPRYRGRVYVGFVNTARRVQQHNGGRK KGGAWRTSGRGPWEMVLVHGFSSVAALRFWAWQHPHASRRLAHVGPR LRGETAFHFLRVLAHMLRAPPWARLPLTLRWVRPDLRQDLCLPPPPHVP LAFGPPPPQAPAPRRRAGPFDDAEPEPDQGDPGACCSLCAQTIQDEEGL CCPHPGCLLRAHVICLAEFLQEPEGQLLPLEGQCPCCEKSLLWGDMLWL CQMDTEKEVEDSELEEAHWTDLLET
Amino acids	1 to 275
Tags	proprietary tag N-Terminus

Specifications

Our [Abpromise guarantee](#) covers the use of **ab163955** in the following tested applications. The application notes include recommended starting dilutions; optimal dilutions/concentrations should be determined by the end user.

Applications	ELISA Western blot
Form	Liquid
Additional notes	Protein concentration is above or equal to 0.05 mg/ml.

Preparation and Storage

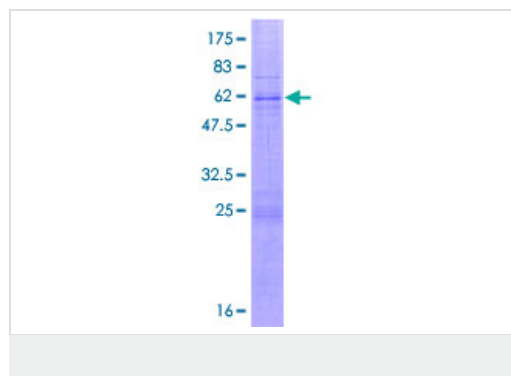
Stability and Storage	Shipped on dry ice. Upon delivery aliquot and store at -80°C. Avoid freeze / thaw cycles. pH: 8.00
------------------------------	---

Constituents: 0.31% Glutathione, 0.79% Tris HCl

General Info

Function	Catalytic subunit of the SLX1-SLX4 structure-specific endonuclease that resolves DNA secondary structures generated during DNA repair and recombination. Has endonuclease activity towards branched DNA substrates, introducing single-strand cuts in duplex DNA close to junctions with ss-DNA. Has a preference for 5'-flap structures, and promotes symmetrical cleavage of static and migrating Holliday junctions (HJs). Resolves HJs by generating two pairs of ligatable, nicked duplex products.
Sequence similarities	Belongs to the SLX1 family. Contains 1 GIY-YIG domain. Contains 1 SLX1-type zinc finger.
Cellular localization	Nucleus.

Images



ab163955 on a 12.5% SDS-PAGE stained with Coomassie Blue.

Please note: All products are "FOR RESEARCH USE ONLY AND ARE NOT INTENDED FOR DIAGNOSTIC OR THERAPEUTIC USE"

Our Abpromise to you: Quality guaranteed and expert technical support

- Replacement or refund for products not performing as stated on the datasheet
- Valid for 12 months from date of delivery
- Response to your inquiry within 24 hours
- We provide support in Chinese, English, French, German, Japanese and Spanish
- Extensive multi-media technical resources to help you
- We investigate all quality concerns to ensure our products perform to the highest standards

If the product does not perform as described on this datasheet, we will offer a refund or replacement. For full details of the Abpromise, please visit <https://www.abcam.com/abpromise> or contact our technical team.

Terms and conditions

- Guarantee only valid for products bought direct from Abcam or one of our authorized distributors