

Product datasheet

Recombinant Human SOCS4 protein ab153591

1 Image

Overview

Product name	Recombinant Human SOCS4 protein
Protein length	Full length protein

Description

Nature	Recombinant
Source	Wheat germ

Amino Acid Sequence

Species	Human
Sequence	MAENNENISKNV D V R P K T S R S R S A D R K D G Y W S G K K L S W S K K S E S Y S D A E T V N G I E K T E V S L R N Q E R K H S C S S I E L D L D H S C G H R F L G R S L K Q K L Q D A V G Q C F P I K N C S S R H S S G L P S K R K I H I S E L M L D K C P F P P R S D L A F R W H F I K R H T A P I N S K S D E W V S T D L S Q T E L R D G Q L K R R N M E E N I N C F S H T N V Q P C V I T T D N A L C R E G P M T G S V M N L V S N N S I E D S D M D S D D E I L T L C T S S R K R N K P K W D L D D E I L Q L E T P P K Y H T Q I D Y V H C L V P D L L Q I N N N P C Y W G V M D K Y A A E A L L E G K P E G T F L L R D S A Q E D Y L F S V S F R R Y S R S L H A R I E Q W N H N F S F D A H D P C V F H S P D I T G L L E H Y K D P S A C M F F E P L L S T P L I R T F P F S L Q H I C R T V I C N C T T Y D G I D A L P I P S S M K L Y L K E Y H Y K S K V R V L R I D A P E Q Q C
Amino acids	1 to 440
Tags	proprietary tag N-Terminus

Specifications

Our [Abpromise guarantee](#) covers the use of **ab153591** in the following tested applications.

The application notes include recommended starting dilutions; optimal dilutions/concentrations should be determined by the end user.

Applications	ELISA Western blot
Form	Liquid
Additional notes	Protein concentration is above or equal to 0.05 mg/ml.

Preparation and Storage

Stability and Storage

Shipped on dry ice. Upon delivery aliquot and store at -80°C. Avoid freeze / thaw cycles.

pH: 8.00

Constituents: 0.31% Glutathione, 0.79% Tris HCl

General Info

Function

SOCS family proteins form part of a classical negative feedback system that regulates cytokine signal transduction. May be a substrate recognition component of a SCF-like ECS (Elongin BC-CUL2/5-SOCS-box protein) E3 ubiquitin-protein ligase complex which mediates the ubiquitination and subsequent proteasomal degradation of target proteins.

Pathway

Protein modification; protein ubiquitination.

Sequence similarities

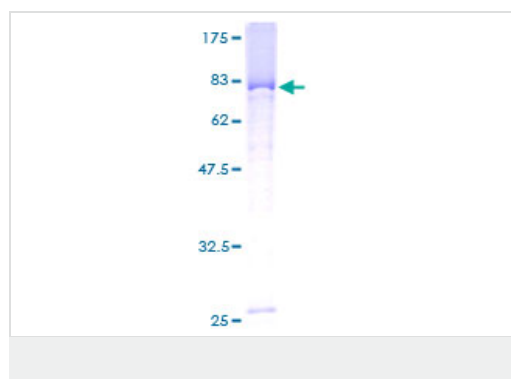
Contains 1 SH2 domain.

Contains 1 SOCS box domain.

Domain

The SOCS box domain mediates the interaction with the Elongin BC complex, an adapter module in different E3 ubiquitin ligase complexes.

Images



ab153591 on a 12.5% SDS-PAGE stained with Coomassie Blue.

Please note: All products are "FOR RESEARCH USE ONLY AND ARE NOT INTENDED FOR DIAGNOSTIC OR THERAPEUTIC USE"

Our Abpromise to you: Quality guaranteed and expert technical support

- Replacement or refund for products not performing as stated on the datasheet
- Valid for 12 months from date of delivery
- Response to your inquiry within 24 hours
- We provide support in Chinese, English, French, German, Japanese and Spanish
- Extensive multi-media technical resources to help you
- We investigate all quality concerns to ensure our products perform to the highest standards

If the product does not perform as described on this datasheet, we will offer a refund or replacement. For full details of the Abpromise, please visit <https://www.abcam.com/abpromise> or contact our technical team.

Terms and conditions

- Guarantee only valid for products bought direct from Abcam or one of our authorized distributors