

Product datasheet

Recombinant Human SPC25 protein ab163545

1 Image

Overview

Product name Recombinant Human SPC25 protein

Protein length Full length protein

Description

Nature Recombinant

Source Wheat germ

Amino Acid Sequence

Species Human

Sequence
 MVEDELALFDKSINEFWNKFKSTDTSCQMAGLRDITYKDSIKAFKAEKLSVK
 LKEEERMVEMFLEYQNQISRQNKLIQEKKNLLKLAIEVKGKKQELEVLT
 ANIQDLKEEYSRKKETISTANKANAERLKRQLQSADLYKDRLGLEIRKIY
 GEKLQFIFTNIDPKNPESPFMFLHLNEARDYEVSDSAPHLEGLAEFQEN
 VRKTNNFSAFLANVRKAFTATVYN

Amino acids 1 to 224

Tags proprietary tag N-Terminus

Specifications

Our [Abpromise guarantee](#) covers the use of **ab163545** in the following tested applications.

The application notes include recommended starting dilutions; optimal dilutions/concentrations should be determined by the end user.

Applications ELISA

Western blot

Form Liquid

Additional notes Protein concentration is above or equal to 0.05 mg/ml.

Preparation and Storage

Stability and Storage Shipped on dry ice. Upon delivery aliquot and store at -80°C. Avoid freeze / thaw cycles.

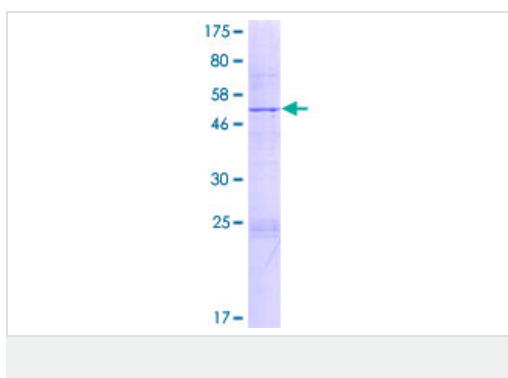
pH: 8.00

Constituents: 0.31% Glutathione, 0.79% Tris HCl

General Info

Function	Acts as a component of the essential kinetochore-associated NDC80 complex, which is required for chromosome segregation and spindle checkpoint activity. Required for kinetochore integrity and the organization of stable microtubule binding sites in the outer plate of the kinetochore.
Sequence similarities	Belongs to the SPC25 family.
Cellular localization	Nucleus. Chromosome > centromere > kinetochore. Localizes to kinetochores from late prophase to anaphase. Localizes specifically to the outer plate of the kinetochore.

Images



ab163545 on a 12.5% SDS-PAGE stained with Coomassie Blue.

Please note: All products are "FOR RESEARCH USE ONLY AND ARE NOT INTENDED FOR DIAGNOSTIC OR THERAPEUTIC USE"

Our Abpromise to you: Quality guaranteed and expert technical support

- Replacement or refund for products not performing as stated on the datasheet
- Valid for 12 months from date of delivery
- Response to your inquiry within 24 hours

- We provide support in Chinese, English, French, German, Japanese and Spanish
- Extensive multi-media technical resources to help you
- We investigate all quality concerns to ensure our products perform to the highest standards

If the product does not perform as described on this datasheet, we will offer a refund or replacement. For full details of the Abpromise, please visit <https://www.abcam.com/abpromise> or contact our technical team.

Terms and conditions

- Guarantee only valid for products bought direct from Abcam or one of our authorized distributors