

Product datasheet

Recombinant Human Solute carrier family 22 member 18 protein ab159035

[1 Image](#)

Overview

| | |
|-----------------------|--|
| Product name | Recombinant Human Solute carrier family 22 member 18 protein |
| Protein length | Full length protein |

Description

| | |
|----------------------------|-------------|
| Nature | Recombinant |
| Source | Wheat germ |
| Amino Acid Sequence | |
| Species | Human |

| | |
|-----------------|---|
| Sequence | <p>MQGARAPRDQQQSPGRMSALGRSSVILLTYVLAATEL TCLFMQFSMPYL SRKLGLDIAFGYLQTTFGVLQLLGGPVFGRFADQRGA RAALTSFLAAL ALYLLAAASSPALPGVYLLFASRLPGALMHTLPAAQM VITDLSAPEERP AALGRLGLCFGVGVILGSLLGGTLVSAYGIQCPAILAAL ATLLGAVLSFT CIPASTKGAKTDAQAPLPGGPRASVFDLKAIASLLRLP DVPRIFLVKVAS NCPTGLFMVMFSIISMDFQLEAAQAGYLMSFFGLLQM VTQGLVIGQLSS HFSEEVLLRASVLVFIVVGLAMAWMSSVFHFCLLVPG LVFSLCTLNVVTD SMLIKAVSTSDTGTMLGLCASVQPLLRTLGPVGGLLY RSEFGVPVFGHVQ VAINTLVLLVLRKMPQRKDKVR</p> |
|-----------------|---|

| | |
|--------------------|----------------------------|
| Amino acids | 1 to 424 |
| Tags | proprietary tag N-Terminus |

Specifications

Our [Abpromise guarantee](#) covers the use of **ab159035** in the following tested applications.

The application notes include recommended starting dilutions; optimal dilutions/concentrations should be determined by the end user.

| | |
|-------------------------|--|
| Applications | ELISA Western blot |
| Form | Liquid |
| Additional notes | Protein concentration is above or equal to 0.05 mg/ml. |

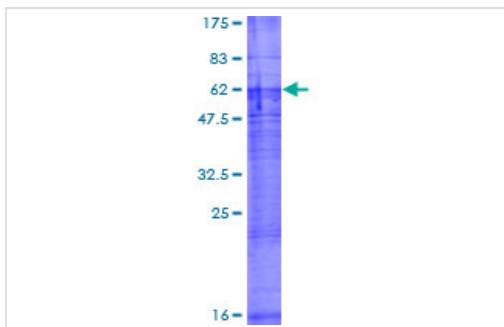
Preparation and Storage

| | |
|------------------------------|--|
| Stability and Storage | Shipped on dry ice. Upon delivery aliquot and store at -80°C. Avoid freeze / thaw cycles. pH: 8.00 Constituents: 0.31% Glutathione, 0.79% Tris HCl |
|------------------------------|--|

General Info

| | |
|------------------------------|--|
| Relevance | Solute carrier family 22 member 18 may act as a transporter of organic cations based on a proton efflux antiport mechanism. It may also play a role in the transport of chloroquine and quinidine-related compounds in kidney. |
| Cellular localization | Apical cell membrane; Multi-pass membrane protein (Potential). Note: Localized at the apical membrane surface of renal proximal tubules. |

Images



ab159035 on a 12.5% SDS-PAGE stained with Coomassie Blue.

SDS-PAGE - Recombinant Human Solute carrier family 22 member 18 protein (ab159035)

Please note: All products are "FOR RESEARCH USE ONLY AND ARE NOT INTENDED FOR DIAGNOSTIC OR THERAPEUTIC USE"

Our Promise to you: Quality guaranteed and expert technical support

- Replacement or refund for products not performing as stated on the datasheet
- Valid for 12 months from date of delivery
- Response to your inquiry within 24 hours
- We provide support in Chinese, English, French, German, Japanese and Spanish
- Extensive multi-media technical resources to help you
- We investigate all quality concerns to ensure our products perform to the highest standards

If the product does not perform as described on this datasheet, we will offer a refund or replacement. For full details of the Abpromise, please visit <https://www.abcam.com/abpromise> or contact our technical team.

Terms and conditions

- Guarantee only valid for products bought direct from Abcam or one of our authorized distributors