

Product datasheet

Recombinant Human TADA3L protein ab171703

1 Image

Overview

<b>Product name</b>	Recombinant Human TADA3L protein
<b>Protein length</b>	Full length protein

Description

<b>Nature</b>	Recombinant
<b>Source</b>	Escherichia coli
<b>Amino Acid Sequence</b>	
<b>Accession</b>	<a href="#">O75528</a>
<b>Species</b>	Human

<b>Sequence</b>	<p>MGSSHHHHHHSSGLVPRGSHMGSMSELKDCPLQFH            DFKSVDHLKVCPRYT            AVLARSEDDGIGIEELDTLQLELETLSSASRRLRVLEA            ETQILTDWQDK            KGDRRFLKLGRDHGELGAPPKHGKPKKQKLEGKAGHG            PGPGRPKSKNLQ            PKIQEYEFTDDPIDVPRIKNDAPNRFWASVEPYCADIT            SEEVRTLEELL            KPPEDAEEHYKIPPLGKHYSQRWAQEDLLEEQKDGA            RAAAVADKKKGLMG            PLTELDTKDVDALLKKSEAQHEQPEDGCPFGALTQRL            LQALVEENIISPM            EDSPIDMSGKESGADGASTSPRNQNKPFVSPHTKS            LESRIKEELIAQGL            LESEDRPAEDSEDEVLAELRKRQAELKALSahnRTKK            HDLLRLAKEEVSR            QELRQRVRMADNEVMDAFRKIMAARQKKRTPTKKEK            DQAWKTLKERESIL KLLDG</p>
-----------------	---

<b>Molecular weight</b>	51 kDa including tags
<b>Amino acids</b>	1 to 432
<b>Tags</b>	His tag N-Terminus

Specifications

Our [Abpromise guarantee](#) covers the use of **ab171703** in the following tested applications.

The application notes include recommended starting dilutions; optimal dilutions/concentrations should be determined by the end user.

<b>Applications</b>	SDS-PAGE
<b>Purity</b>	> 80 % SDS-PAGE. ab171703 is purified using conventional chromatography techniques.
<b>Form</b>	Liquid

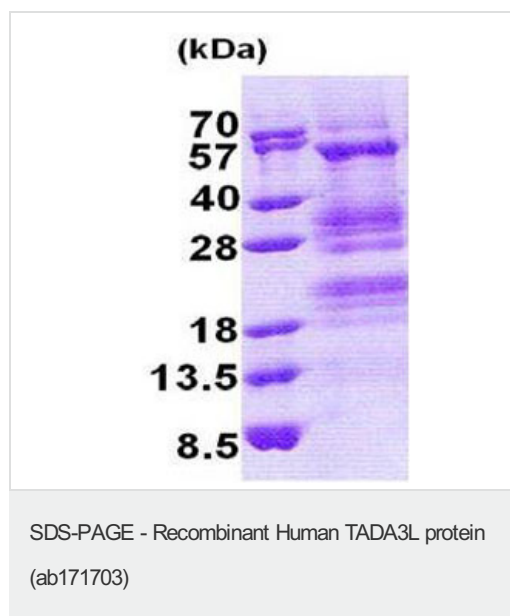
## Preparation and Storage

<b>Stability and Storage</b>	Shipped at 4°C. Store at +4°C short term (1-2 weeks). Upon delivery aliquot. Store at -20°C or -80°C. Avoid freeze / thaw cycle.  pH: 8.00 Constituents: 0.03% DTT, 0.32% Tris HCl, 50% Glycerol, 1.17% Sodium chloride
------------------------------	--

## General Info

<b>Relevance</b>	TADA3L functions as a component of the PCAF complex. The PCAF complex is capable of efficiently acetylating histones in a nucleosomal context. The PCAF complex could be considered as the human version of the yeast SAGA complex. TADA3L is also known as a coactivator for p53/TP53-dependent transcriptional activation. The PCAF complex is composed of a number of TBP-associated factors (TAFs), such as TAF5, TAF5L, TAF6, TAF6L, TAF9, TAF10 and TAF12, PCAF, and also PCAF-associated factors (PAFs), such as TADA2L/ADA2, TADA3L/ADA3 and SPT3.
<b>Cellular localization</b>	Nuclear

## Images



15% SDS-PAGE analysis of ab171703 (3µg).

**Please note:** All products are "FOR RESEARCH USE ONLY AND ARE NOT INTENDED FOR DIAGNOSTIC OR THERAPEUTIC USE"

## **Our Abpromise to you: Quality guaranteed and expert technical support**

---

- Replacement or refund for products not performing as stated on the datasheet
- Valid for 12 months from date of delivery
- Response to your inquiry within 24 hours
  
- We provide support in Chinese, English, French, German, Japanese and Spanish
- Extensive multi-media technical resources to help you
- We investigate all quality concerns to ensure our products perform to the highest standards

If the product does not perform as described on this datasheet, we will offer a refund or replacement. For full details of the Abpromise, please visit <https://www.abcam.com/abpromise> or contact our technical team.

## **Terms and conditions**

---

- Guarantee only valid for products bought direct from Abcam or one of our authorized distributors