

Product datasheet

Recombinant Human TPX2 protein ab153198

1 Image

Overview

Product name Recombinant Human TPX2 protein
Protein length Protein fragment

Description

Nature Recombinant
Source Wheat germ

Amino Acid Sequence

Species Human
Sequence AEGLSGSLVQEPFQLATEKRAKERQELEKRMAEVEAQAQQLLEEARLQEE
 EQKKEELARLRRELVHKANPIRKYQGLEIKSSDQPLTVPVSPKFFSTRFHC
Amino acids 648 to 747
Tags GST tag N-Terminus

Specifications

Our [Abpromise guarantee](#) covers the use of **ab153198** in the following tested applications.
 The application notes include recommended starting dilutions; optimal dilutions/concentrations should be determined by the end user.

Applications ELISA
 Western blot
Form Liquid
Additional notes Protein concentration is above or equal to 0.05 mg/ml.

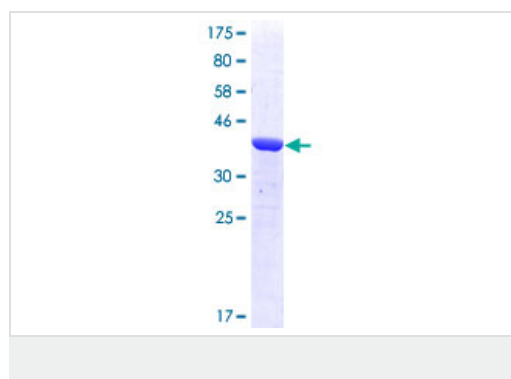
Preparation and Storage

Stability and Storage Shipped on dry ice. Upon delivery aliquot and store at -80°C. Avoid freeze / thaw cycles.
 pH: 8.00
 Constituents: 0.31% Glutathione, 0.79% Tris HCl

General Info

Function	Spindle assembly factor. Required for normal assembly of mitotic spindles. Required for normal assembly of microtubules during apoptosis. Required for chromatin and/or kinetochore dependent microtubule nucleation. Mediates AURKA localization to spindle microtubules. Activates AURKA by promoting its autophosphorylation at 'Thr-288' and protects this residue against dephosphorylation.
Tissue specificity	Expressed in lung carcinoma cell lines but not in normal lung tissues.
Sequence similarities	Belongs to the TPX2 family.
Developmental stage	Exclusively expressed in proliferating cells from the transition G1/S until the end of cytokinesis.
Post-translational modifications	Phosphorylated upon DNA damage, probably by ATM or ATR.
Cellular localization	Nucleus. Cytoplasm > cytoskeleton > spindle. Cytoplasm > cytoskeleton > spindle pole. During mitosis it is strictly associated with the spindle pole and with the mitotic spindle, whereas during S and G2, it is diffusely distributed throughout the nucleus. Is released from the nucleus in apoptotic cells and is detected on apoptotic microtubules.

Images



ab153198 on a 12.5% SDS-PAGE stained with Coomassie Blue.

Please note: All products are "FOR RESEARCH USE ONLY AND ARE NOT INTENDED FOR DIAGNOSTIC OR THERAPEUTIC USE"

Our Abpromise to you: Quality guaranteed and expert technical support

- Replacement or refund for products not performing as stated on the datasheet
- Valid for 12 months from date of delivery
- Response to your inquiry within 24 hours
- We provide support in Chinese, English, French, German, Japanese and Spanish
- Extensive multi-media technical resources to help you
- We investigate all quality concerns to ensure our products perform to the highest standards

If the product does not perform as described on this datasheet, we will offer a refund or replacement. For full details of the Abpromise, please visit <https://www.abcam.com/abpromise> or contact our technical team.

Terms and conditions

- Guarantee only valid for products bought direct from Abcam or one of our authorized distributors