

Product datasheet

Recombinant Human Visfatin protein ab63275

1 Image

Overview

Product name	Recombinant Human Visfatin protein
Protein length	Protein fragment

Description

Nature	Recombinant
Source	Escherichia coli

Amino Acid Sequence

Species	Human
Sequence	MDYKDDDDKA S PPNTSKVYS YFECREKKTE NSKLRKVKYE ETVFYGLQYI LNKYLK GKVV TKEKIQEAKD VYKEHFQDDV FNEKGWNYIL EKYDGHLP I EIKAVPEGFVI PRGNVLF TVE NTDPECYWLT NWIETLVQS WYPITVATNS REQKKILAKY LLETSGNLDG LEYKLHDFGY RGVSSQETAG IGASAHLVNF KGTDTVAGLA LIKYYGTKD PVPGYSPAA EHSTITAWGK DHEKDAFEHI VTQFSSVPVS VVSDSYDIM ACEKIWGEDL RHLVSRSTQ APLIIRPDSG NPLDVLKVL EILGKKFPVT ENSKGYKLLP PYLRVIQGDG VDINTLQE
Amino acids	27 to 363

Specifications

Our [Abpromise guarantee](#) covers the use of **ab63275** in the following tested applications.

The application notes include recommended starting dilutions; optimal dilutions/concentrations should be determined by the end user.

Applications	Western blot
Purity	> 95 % SDS-PAGE.
Form	Lyophilised
Additional notes	Product is NOT sterile! Please filter the product by an appropriate sterile filter before using it in

cell culture.

Preparation and Storage

Stability and Storage

Shipped at 4°C. Upon delivery aliquot. Store at -80°C. Avoid freeze / thaw cycle.

Preservative: None

Constituents: 20mM Sodium chloride, 20mM Tris, pH 7.5

Reconstitution

Add deionized water to prepare a working stock solution of approximately 0.5 mg/ml and let the lyophilized pellet dissolve completely.

General Info

Function

Catalyzes the condensation of nicotinamide with 5-phosphoribosyl-1-pyrophosphate to yield nicotinamide mononucleotide, an intermediate in the biosynthesis of NAD. It is the rate limiting component in the mammalian NAD biosynthesis pathway.

Tissue specificity

Expressed in large amounts in bone marrow, liver tissue, and muscle. Also present in heart, placenta, lung, and kidney tissues.

Pathway

Cofactor biosynthesis; NAD(+) biosynthesis; nicotinamide D-ribonucleotide from 5-phospho-alpha-D-ribose 1-diphosphate and nicotinamide: step 1/1.

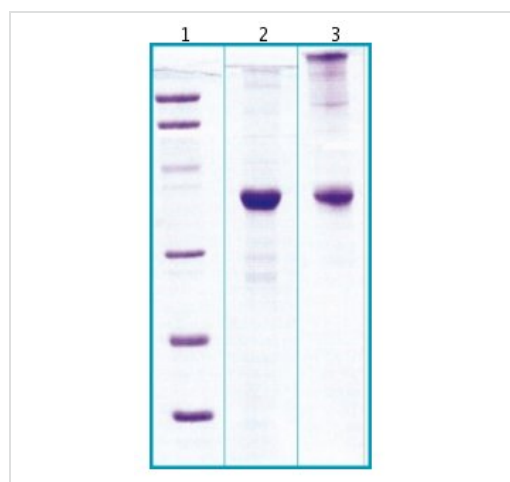
Sequence similarities

Belongs to the NAPRTase family.

Cellular localization

Cytoplasm.

Images



SDS-PAGE - PBEF protein (Tagged) (ab63275)

LANES:

1. MW marker – 14, 21, 31, 45, 66, 97 kDa

2. reduced and heated sample, 5µg/lane

3. non-reduced and non-heated sample,
5µg/lane

Please note: All products are "FOR RESEARCH USE ONLY AND ARE NOT INTENDED FOR DIAGNOSTIC OR THERAPEUTIC USE"

Our Abpromise to you: Quality guaranteed and expert technical support

- Replacement or refund for products not performing as stated on the datasheet

- Valid for 12 months from date of delivery
- Response to your inquiry within 24 hours

- We provide support in Chinese, English, French, German, Japanese and Spanish
- Extensive multi-media technical resources to help you
- We investigate all quality concerns to ensure our products perform to the highest standards

If the product does not perform as described on this datasheet, we will offer a refund or replacement. For full details of the Abpromise, please visit <https://www.abcam.com/abpromise> or contact our technical team.

Terms and conditions

- Guarantee only valid for products bought direct from Abcam or one of our authorized distributors