

Product datasheet

Recombinant Human WHSC2 / NELF-A protein  
ab116197

1 Image

Overview

<b>Product name</b>	Recombinant Human WHSC2 / NELF-A protein
<b>Protein length</b>	Full length protein

Description

<b>Nature</b>	Recombinant
<b>Source</b>	Escherichia coli
<b>Amino Acid Sequence</b>	
<b>Accession</b>	<a href="#">Q9H3P2</a>
<b>Species</b>	Human

<b>Sequence</b>	<p>MGSSHHHHHHSSGLVPRGSHMPGQRRALSPKMASM          RESDTGLWLHNKLG          TDELWAPPSIASLLTAAVIDNIRLCFHGLSSAVKLLKLL          GTLHLPRRTVD          EMKGALMEIIQLASLDSDPWVLMVADILKSFPDGTSLN          LELEEQNPVQD          ILGELREKVGEEASAMLPLECYLNKNALTTLAGPLT          PPVKHFQLKRKP          KSATLRAELLQKSTETAQQLKRSAGVPPHAKGRGLLR          KMDTTTPLKGIPK          QAPFRSPTAPSVFSPGTGNRTPIPPSRTLLRKERGVKLL          DISELDMVGAGR          EAKRRRKTLDAEVVEKPAKEETVVENATPDYAAGLVS          TQKLGSLNNEPAL          PSTSYLPSTPSVVPASSYPSSETPPAPSSREASRPPE          EPSAPSPTLPAQ          FKQRAPMYNSGLSPATPTPAAPTSPPTPTTTPAVAPT          QTPPVAMVAPQT          QAPAQQPKKNLSLTREQMFAAQEMFKTANKVTRPE          KALILGFMAGSREN          PCQEQQGDVIQIKLSEHTEDLPKADGGGSTTMLVDTVF          EMNYATGQWTRFK KYKPMTNVS</p>
-----------------	--

<b>Molecular weight</b>	61 kDa including tags
-------------------------	-----------------------

<b>Amino acids</b>	1 to 539
<b>Tags</b>	His tag N-Terminus

## Specifications

---

Our [Abpromise guarantee](#) covers the use of **ab116197** in the following tested applications.

The application notes include recommended starting dilutions; optimal dilutions/concentrations should be determined by the end user.

<b>Applications</b>	SDS-PAGE
<b>Purity</b>	> 85 % SDS-PAGE. ab116197 was purified using conventional chromatography techniques.
<b>Form</b>	Liquid
<b>Additional notes</b>	Protein previously labeled as WHSC2.

## Preparation and Storage

---

<b>Stability and Storage</b>	Shipped at 4°C. Store at +4°C short term (1-2 weeks). Upon delivery aliquot. Store at -20°C or -80°C. Avoid freeze / thaw cycle.  pH: 8.00 Constituents: 0.32% Tris HCl, 1.17% Sodium chloride, 0.08% DTT, 0.03% EDTA, 20% Glycerol
------------------------------	--

## General Info

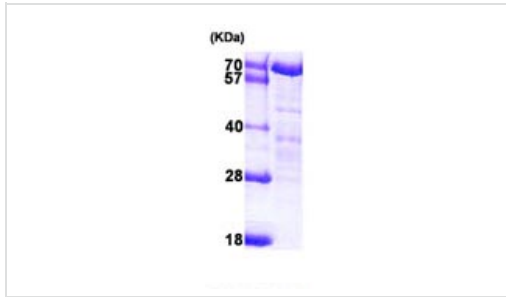
---

<b>Function</b>	Essential component of the NELF complex, a complex that negatively regulates the elongation of transcription by RNA polymerase II. The NELF complex, which acts via an association with the DSIF complex and causes transcriptional pausing, is counteracted by the P-TEFb kinase complex. Probably required to interact with the RNA polymerase II complex.
<b>Tissue specificity</b>	Ubiquitous. Expressed in heart, brain, placenta, liver, skeletal muscle, kidney and pancreas. Expressed at lower level in adult lung. Expressed in fetal brain, lung, liver and kidney.
<b>Sequence similarities</b>	Belongs to the NELF-A family. Contains 1 HDAg-like domain.
<b>Domain</b>	The HDAg-like domain is essential for transcriptional repression, and mediates the interaction with the RNA polymerase II complex.
<b>Cellular localization</b>	Nucleus.

---

## Images

---



15% SDS-PAGE analysis of 3 µg ab116197.

SDS-PAGE - Recombinant Human WHSC2 / NELF-A protein (ab116197)

**Please note:** All products are "FOR RESEARCH USE ONLY AND ARE NOT INTENDED FOR DIAGNOSTIC OR THERAPEUTIC USE"

### Our Abpromise to you: Quality guaranteed and expert technical support

- Replacement or refund for products not performing as stated on the datasheet
- Valid for 12 months from date of delivery
- Response to your inquiry within 24 hours
- We provide support in Chinese, English, French, German, Japanese and Spanish
- Extensive multi-media technical resources to help you
- We investigate all quality concerns to ensure our products perform to the highest standards

If the product does not perform as described on this datasheet, we will offer a refund or replacement. For full details of the Abpromise, please visit <https://www.abcam.com/abpromise> or contact our technical team.

### Terms and conditions

- Guarantee only valid for products bought direct from Abcam or one of our authorized distributors