

Product datasheet

Recombinant Human xCT protein ab112403

1 Image

Overview

<b>Product name</b>	Recombinant Human xCT protein
<b>Protein length</b>	Full length protein

Description

<b>Nature</b>	Recombinant
<b>Source</b>	Wheat germ
<b>Amino Acid Sequence</b>	
<b>Accession</b>	<a href="#">Q9UPY5</a>
<b>Species</b>	Human

<b>Sequence</b>	<p>MVRKPVVSTISKGGYLQGNVNGRLPSLGNKEPPGQEK  VQLKRKVTLLRGV  SIIIGTIIGAGIFISPKGVLQNTGSGMSLTWTVCGVLSLF  GALSYAEL  GTTIKKSGGHYTYILEVFGPLPAFVRVWVELLIIRPAATA  VISLAFGRYI  LEPFFIQCEIPELAIKLITAVGITVVMVLNSMSVSWARI  QIFLTFCKLT  AILIIVPGVMQLIKGQTQNFKDAFSGRDSSITRLPLAFYY  GMYAYAGWF  YLNFTVEEVENPEKTIPLAICISMAMTIGVLTNAVYFTTI  NAEELLS  NAVAVTFSERLLGNFSLAVPIFVALSCFGSMNGGVFA  VSRLFVWASREGH  LPEILSMIHVRKHTPLPAVIVLHPLTMIMLFSGDLDSLIN  FLSFARWLF  GLAVAGLMLRYKCPDMHRPFKVPLFIPALFSFTCLFMV  ALSLYSDPFST  GIGFVITLTGVPAYYLFIIWDKKPRWFRIMSEKITRTLQIIL  EVVPEEDK L</p>
-----------------	--

<b>Molecular weight</b>	81 kDa including tags
<b>Amino acids</b>	1 to 501

Specifications

Our [Abpromise guarantee](#) covers the use of **ab112403** in the following tested applications.

The application notes include recommended starting dilutions; optimal dilutions/concentrations should be determined by the end user.

<b>Applications</b>	ELISA SDS-PAGE Western blot Other
<b>Form</b>	Liquid
<b>Additional notes</b>	Best to use within three months from the date of receipt of this protein.

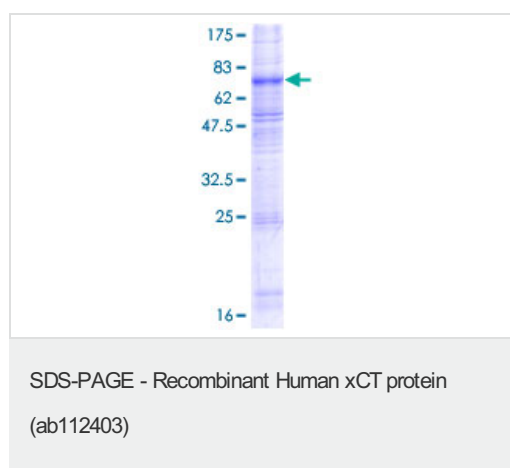
## Preparation and Storage

<b>Stability and Storage</b>	Shipped on dry ice. Upon delivery aliquot and store at -80°C. Avoid freeze / thaw cycles. pH: 8.00 Constituents: 0.79% Tris HCl, 0.31% Glutathione
------------------------------	--

## General Info

<b>Function</b>	Sodium-independent, high-affinity exchange of anionic amino acids with high specificity for anionic form of cystine and glutamate.
<b>Sequence similarities</b>	Belongs to the amino acid-polyamine-organocation (APC) superfamily. L-type amino acid transporter (LAT) (TC 2.A.3.8) family.
<b>Cellular localization</b>	Membrane.

## Images



12.5% SDS-PAGE analysis of ab112403. Stained with Coomassie Blue

**Please note:** All products are "FOR RESEARCH USE ONLY AND ARE NOT INTENDED FOR DIAGNOSTIC OR THERAPEUTIC USE"

## Our Abpromise to you: Quality guaranteed and expert technical support

- Replacement or refund for products not performing as stated on the datasheet
- Valid for 12 months from date of delivery

- Response to your inquiry within 24 hours
- We provide support in Chinese, English, French, German, Japanese and Spanish
- Extensive multi-media technical resources to help you
- We investigate all quality concerns to ensure our products perform to the highest standards

If the product does not perform as described on this datasheet, we will offer a refund or replacement. For full details of the Abpromise, please visit <https://www.abcam.com/abpromise> or contact our technical team.

### **Terms and conditions**

---

- Guarantee only valid for products bought direct from Abcam or one of our authorized distributors