

Product datasheet

Recombinant human AHA1 protein ab80352

3 Images

Overview

Product name Recombinant human AHA1 protein
Protein length Full length protein

Description

Nature Recombinant
Source Escherichia coli

Amino Acid Sequence

Species Human

Specifications

Our [Abpromise guarantee](#) covers the use of **ab80352** in the following tested applications.

The application notes include recommended starting dilutions; optimal dilutions/concentrations should be determined by the end user.

Biological activity Specific Activity: The addition of AHA1 increased ATPase activity of hsp90 alpha from 0.18 to 0.94 pmol/min/ug. Assay conditions: 50 µl reaction mix (100 mM Tris-HCl pH7.4, 20 mM KCl, 6 mM MgCl₂, 200 µM ATP, and 5 µg Hsp90alpha) was incubated with Aha1 (0-10 µg) for 3 hrs at 37°C. To stop the reaction, 100 µl of the malachite green reagent was added to each well. Absorbance at 620 nm was measured.

Applications Western blot
 Functional Studies
 SDS-PAGE

Purity > 90 % SDS-PAGE.

Form Liquid

Preparation and Storage

Stability and Storage Shipped on Dry Ice. Upon delivery aliquot. Store at -80°C. Avoid freeze / thaw cycle.
 pH: 8.00
 Constituents: 0.0462% DTT, 0.395% Tris HCl, 0.05% Tween, 30% Glycerol, 0.58% Sodium

chloride

This product is an active protein and may elicit a biological response in vivo, handle with caution.

General Info

Function

Cochaperone that stimulates HSP90 ATPase activity (By similarity). May affect a step in the endoplasmic reticulum to Golgi trafficking.

Tissue specificity

Expressed in numerous tissues, including brain, heart, skeletal muscle and kidney and, at lower levels, liver and placenta.

Sequence similarities

Belongs to the AHA1 family.

Cellular localization

Cytoplasm > cytosol. Endoplasmic reticulum. May transiently interact with the endoplasmic reticulum.

Images

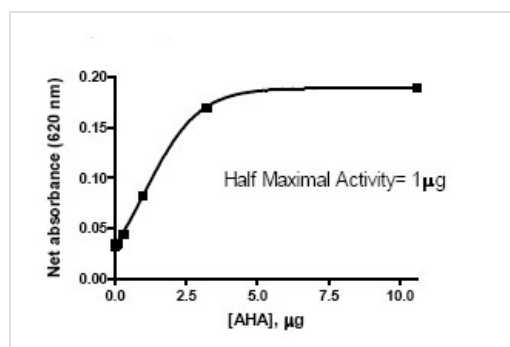
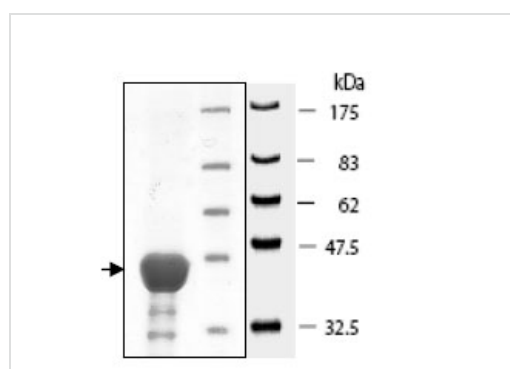


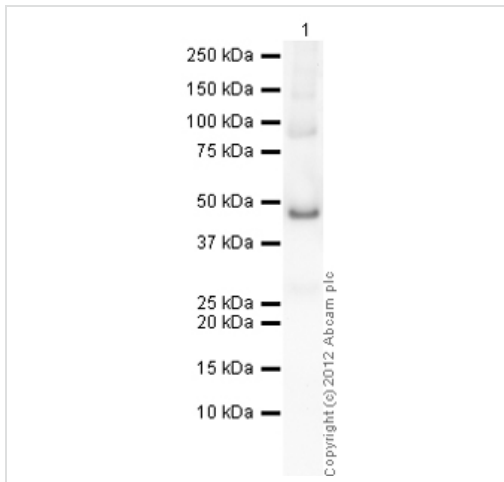
Image showing the effect of ab80352 on ATPase activity of HSP90α.

Functional Studies - Recombinant human AHA1 protein (ab80352)



10%SDS-PAGE showing ab80352 at approximately 38kDa (7μg).

SDS-PAGE - Recombinant human AHA1 protein (ab80352)



Western blot - Recombinant human AHA1 protein
(ab80352)

Please note: All products are "FOR RESEARCH USE ONLY AND ARE NOT INTENDED FOR DIAGNOSTIC OR THERAPEUTIC USE"

Our Abpromise to you: Quality guaranteed and expert technical support

- Replacement or refund for products not performing as stated on the datasheet
- Valid for 12 months from date of delivery
- Response to your inquiry within 24 hours
- We provide support in Chinese, English, French, German, Japanese and Spanish
- Extensive multi-media technical resources to help you
- We investigate all quality concerns to ensure our products perform to the highest standards

If the product does not perform as described on this datasheet, we will offer a refund or replacement. For full details of the Abpromise, please visit <https://www.abcam.com/abpromise> or contact our technical team.

Terms and conditions

- Guarantee only valid for products bought direct from Abcam or one of our authorized distributors