

Product datasheet

Recombinant human BMX protein ab60877

2 Images

Overview

Product name Recombinant human BMX protein
Protein length Full length protein

Description

Nature Recombinant
Source Baculovirus infected Sf9 cells
Amino Acid Sequence
Species Human

Specifications

Our [Abpromise guarantee](#) covers the use of **ab60877** in the following tested applications.

The application notes include recommended starting dilutions; optimal dilutions/concentrations should be determined by the end user.

Applications SDS-PAGE
 Functional Studies
Form Liquid
Additional notes [ab204877](#) (Poly (4:1 Glu, Tyr) peptide) can be utilized as a substrate for assessing kinase activity

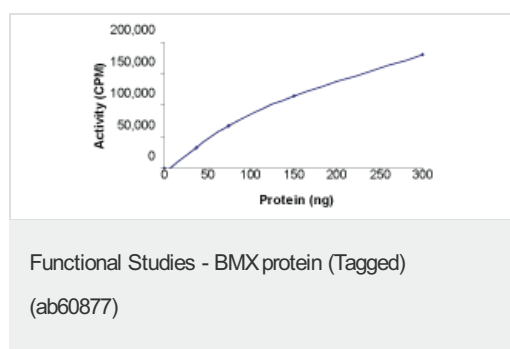
Preparation and Storage

Stability and Storage Shipped on dry ice. Upon delivery aliquot and store at -80°C. Avoid freeze / thaw cycles.
 Preservative: None
 Constituents: 25% Glycerol, 50mM Tris HCl, 150mM Sodium chloride, 0.25mM DTT, 0.1mM EGTA, 0.1mM EDTA, 0.1mM PMSF, pH 7.5
 This product is an active protein and may elicit a biological response in vivo, handle with caution.

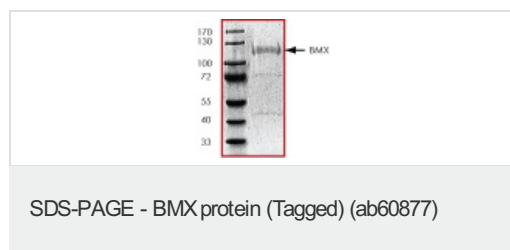
General Info

Function	Activity is required for interleukin 6 (IL-6) induced differentiation. May play a role in the growth and differentiation of hematopoietic cells. May be involved in signal transduction in endocardial and arterial endothelial cells.
Tissue specificity	Preferentially expressed in epithelial and endothelial cells.
Sequence similarities	Belongs to the protein kinase superfamily. Tyr protein kinase family. TEC subfamily. Contains 1 Btk-type zinc finger. Contains 1 PH domain. Contains 1 protein kinase domain. Contains 1 SH2 domain.
Domain	SH2 domain mediates interaction with RUFY1.
Cellular localization	Cytoplasm.

Images



Sample Kinase Activity Plot.



ab60877 on SDS-PAGE, MW ~110 kDa.

Please note: All products are "FOR RESEARCH USE ONLY AND ARE NOT INTENDED FOR DIAGNOSTIC OR THERAPEUTIC USE"

Our Abpromise to you: Quality guaranteed and expert technical support

- Replacement or refund for products not performing as stated on the datasheet
- Valid for 12 months from date of delivery
- Response to your inquiry within 24 hours
- We provide support in Chinese, English, French, German, Japanese and Spanish
- Extensive multi-media technical resources to help you
- We investigate all quality concerns to ensure our products perform to the highest standards

If the product does not perform as described on this datasheet, we will offer a refund or replacement. For full details of the Abpromise, please visit <https://www.abcam.com/abpromise> or contact our technical team.

Terms and conditions

- Guarantee only valid for products bought direct from Abcam or one of our authorized distributors