

## Product datasheet

# Recombinant human MARK2 protein ab119135

[2 Images](#)

### Overview

---

<b>Product name</b>	Recombinant human MARK2 protein
<b>Protein length</b>	Full length protein

### Description

---

<b>Nature</b>	Recombinant
<b>Source</b>	Baculovirus infected Sf9 cells

### Amino Acid Sequence

<b>Accession</b>	<a href="#">Q7KZ17</a>
<b>Species</b>	Human
<b>Molecular weight</b>	114 kDa including tags
<b>Amino acids</b>	1 to 788

### Specifications

---

Our [Abpromise guarantee](#) covers the use of **ab119135** in the following tested applications.

The application notes include recommended starting dilutions; optimal dilutions/concentrations should be determined by the end user.

<b>Biological activity</b>	Specific Activity: 725 - 795 nmol/min/mg
<b>Applications</b>	SDS-PAGE Western blot Functional Studies
<b>Purity</b>	> 70 % SDS-PAGE. Purity was determined to be >70% by densitometry.
<b>Form</b>	Liquid
<b>Additional notes</b>	<a href="#">ab204854</a> (Cdc25C peptide) can be utilized as a substrate for assessing kinase activity

### Preparation and Storage

---

<b>Stability and Storage</b>	Shipped on dry ice. Upon delivery aliquot and store at -80°C. Avoid freeze / thaw cycles. pH: 7.50
------------------------------	---

Constituents: 0.31% Glutathione, 0.002% PMSF, 0.004% DTT, 0.79% Tris HCl, 0.003% EDTA, 25% Glycerol, 0.88% Sodium chloride

This product is an active protein and may elicit a biological response in vivo, handle with caution.

## General Info

---

### Function

Role in epithelial morphogenesis. Modulates the developmental decision to build a columnar versus a hepatic epithelial cell apparently by promoting a switch from a direct to a transcytotic mode of apical protein delivery. Essential for the asymmetric development of membrane domains of polarized epithelial cells. One or more isoforms may play a role in graft rejection.

### Tissue specificity

High levels of expression in heart, brain, skeletal muscle and pancreas, lower levels observed in lung, liver and kidney.

### Sequence similarities

Belongs to the protein kinase superfamily. CAMK Ser/Thr protein kinase family. MARK subfamily.

Contains 1 KA1 (kinase-associated) domain.

Contains 1 protein kinase domain.

Contains 1 UBA domain.

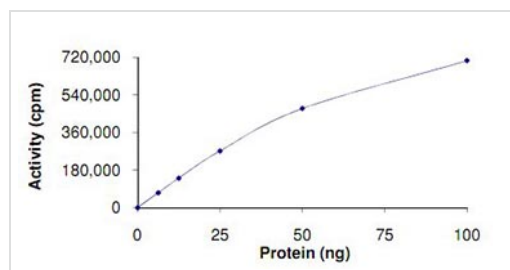
### Cellular localization

Cell membrane. Phosphorylated by PRKCZ in polarized epithelial cells, resulting in an interaction with YWHAZ which promotes relocation from the lateral to the apical membrane.

---

## Images

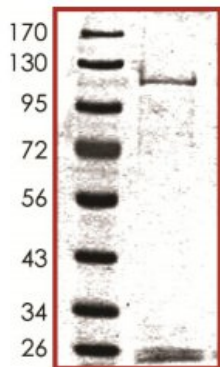
---



Sample Kinase Activity Plot: The specific activity of ab119135 was determined to be 795 nmol/min/mg.

Functional Studies - MARK2 protein (Active)  
(ab119135)

SDS-PAGE analysis of ab119135.



SDS-PAGE - MARK2 protein (Active) (ab119135)

**Please note:** All products are "FOR RESEARCH USE ONLY AND ARE NOT INTENDED FOR DIAGNOSTIC OR THERAPEUTIC USE"

### Our Abpromise to you: Quality guaranteed and expert technical support

- Replacement or refund for products not performing as stated on the datasheet
- Valid for 12 months from date of delivery
- Response to your inquiry within 24 hours
- We provide support in Chinese, English, French, German, Japanese and Spanish
- Extensive multi-media technical resources to help you
- We investigate all quality concerns to ensure our products perform to the highest standards

If the product does not perform as described on this datasheet, we will offer a refund or replacement. For full details of the Abpromise, please visit <https://www.abcam.com/abpromise> or contact our technical team.

### Terms and conditions

- Guarantee only valid for products bought direct from Abcam or one of our authorized distributors