

Product datasheet

Recombinant human NEK11 protein ab125544

2 Images

Overview

Product name	Recombinant human NEK11 protein
Protein length	Full length protein

Description

Nature	Recombinant
Source	Baculovirus infected Sf9 cells

Amino Acid Sequence

Accession	Q8NG66
Species	Human
Molecular weight	110 kDa including tags
Amino acids	1 to 645

Specifications

Our [Abpromise guarantee](#) covers the use of **ab125544** in the following tested applications.

The application notes include recommended starting dilutions; optimal dilutions/concentrations should be determined by the end user.

Biological activity	The specific activity of ab125544 was determined to be 25 nmol/min/mg as per activity assay protocol.
----------------------------	---

Applications	Western blot Functional Studies SDS-PAGE
---------------------	--

Purity	> 90 % SDS-PAGE. Assessed by densitometry.
---------------	---

Form	Liquid
-------------	--------

Additional notes	ab64311 (Myelin Basic Protein protein) can be utilized as a substrate for assessing kinase activity
-------------------------	---

Preparation and Storage

Stability and Storage

Shipped on dry ice. Upon delivery aliquot and store at -80°C. Avoid freeze / thaw cycles.

pH: 7.50

Constituents: 0.004% EGTA, 0.002% PMSF, 0.004% DTT, 0.79% Tris HCl, 0.003% EDTA, 25% Glycerol, 0.88% Sodium chloride

This product is an active protein and may elicit a biological response in vivo, handle with caution.

General Info

Function

Possible role in S-phase checkpoint mechanism.

Tissue specificity

Poorly expressed in cerebellum, trachea, lung, appendix, and uterus.

Sequence similarities

Belongs to the protein kinase superfamily. NEK Ser/Thr protein kinase family. NIMA subfamily. Contains 1 protein kinase domain.

Developmental stage

Predominantly expressed at S/G2/M phase.

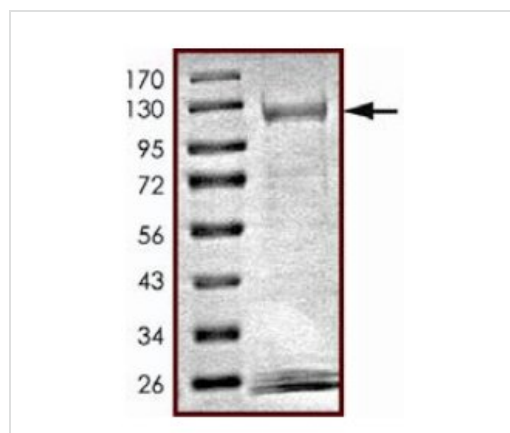
Post-translational modifications

Phosphorylated.

Cellular localization

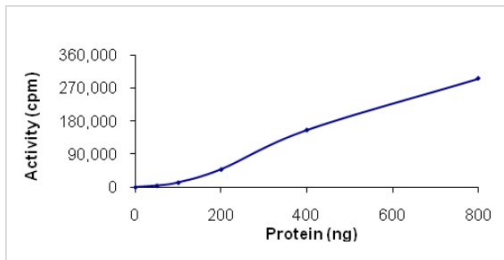
Nucleus. Nucleus > nucleolus. Nuclear during interphase but moves to the polar microtubules during prometaphase and metaphase. Accumulates in the nucleolus in G1/S-arrested cells.

Images



SDS-PAGE analysis of ab125544.

SDS-PAGE - Recombinant human NEK11 protein
(ab125544)



The specific activity of ab125544 was determined to be 25nmol/min/mg.

Functional Studies - Recombinant human NEK11 protein (ab125544)

Please note: All products are "FOR RESEARCH USE ONLY AND ARE NOT INTENDED FOR DIAGNOSTIC OR THERAPEUTIC USE"

Our Abpromise to you: Quality guaranteed and expert technical support

- Replacement or refund for products not performing as stated on the datasheet
- Valid for 12 months from date of delivery
- Response to your inquiry within 24 hours
- We provide support in Chinese, English, French, German, Japanese and Spanish
- Extensive multi-media technical resources to help you
- We investigate all quality concerns to ensure our products perform to the highest standards

If the product does not perform as described on this datasheet, we will offer a refund or replacement. For full details of the Abpromise, please visit <https://www.abcam.com/abpromise> or contact our technical team.

Terms and conditions

- Guarantee only valid for products bought direct from Abcam or one of our authorized distributors