

Product datasheet

Recombinant human PAK1 protein ab125805

[2 Images](#)

Overview

Product name	Recombinant human PAK1 protein
Protein length	Full length protein

Description

Nature	Recombinant
Source	Baculovirus infected Sf9 cells

Amino Acid Sequence

Accession	Q13153
Species	Human
Molecular weight	95 kDa including tags
Amino acids	1 to 545

Specifications

Our [Abpromise guarantee](#) covers the use of **ab125805** in the following tested applications.

The application notes include recommended starting dilutions; optimal dilutions/concentrations should be determined by the end user.

Biological activity The specific activity of ab125805 was determined to be 68 - 74 nmol/min/mg.

Applications Western blot
Functional Studies
SDS-PAGE

Purity > 95 % Densitometry.
Purity was determined to be >95% by densitometry.

Form Liquid

Preparation and Storage

Stability and Storage Shipped on dry ice. Upon delivery aliquot and store at -80°C. Avoid freeze / thaw cycles.
pH: 7.50
Constituents: 0.31% Glutathione, 0.002% PMSF, 0.004% DTT, 0.79% Tris HCl, 0.003% EDTA,

25% Glycerol, 0.88% Sodium chloride

This product is an active protein and may elicit a biological response in vivo, handle with caution.

General Info

Function

The activated kinase acts on a variety of targets. Likely to be the GTPase effector that links the Rho-related GTPases to the JNK MAP kinase pathway. Activated by CDC42 and RAC1. Involved in dissolution of stress fibers and reorganization of focal complexes. Involved in regulation of microtubule biogenesis through phosphorylation of TBCB. Activity is inhibited in cells undergoing apoptosis, potentially due to binding of CDC2L1 and CDC2L2.

Sequence similarities

Belongs to the protein kinase superfamily. STE Ser/Thr protein kinase family. STE20 subfamily. Contains 1 CRIB domain. Contains 1 protein kinase domain.

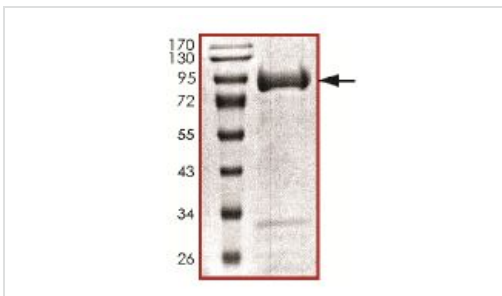
Post-translational modifications

Autophosphorylated when activated by CDC42/p21 and RAC1.

Cellular localization

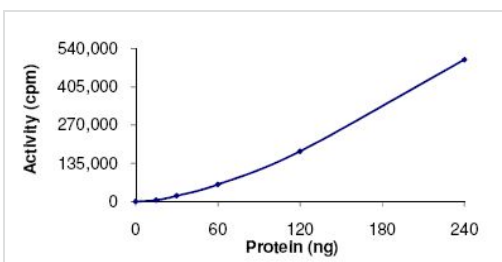
Cytoplasm. Cell junction > focal adhesion. Recruited to focal adhesions upon activation.

Images



SDS-PAGE analysis of ab125805.

SDS-PAGE - Recombinant human PAK1 protein
(ab125805)



Sample Kinase Assay showing the specific activity of ab125805 to be 68 nmol/min/mg.

Functional Studies - PAK1 protein (Active)
(ab125805)

Please note: All products are "FOR RESEARCH USE ONLY AND ARE NOT INTENDED FOR DIAGNOSTIC OR THERAPEUTIC USE"

Our Abpromise to you: Quality guaranteed and expert technical support

- Replacement or refund for products not performing as stated on the datasheet
- Valid for 12 months from date of delivery
- Response to your inquiry within 24 hours

- We provide support in Chinese, English, French, German, Japanese and Spanish
- Extensive multi-media technical resources to help you
- We investigate all quality concerns to ensure our products perform to the highest standards

If the product does not perform as described on this datasheet, we will offer a refund or replacement. For full details of the Abpromise, please visit <https://www.abcam.com/abpromise> or contact our technical team.

Terms and conditions

- Guarantee only valid for products bought direct from Abcam or one of our authorized distributors